

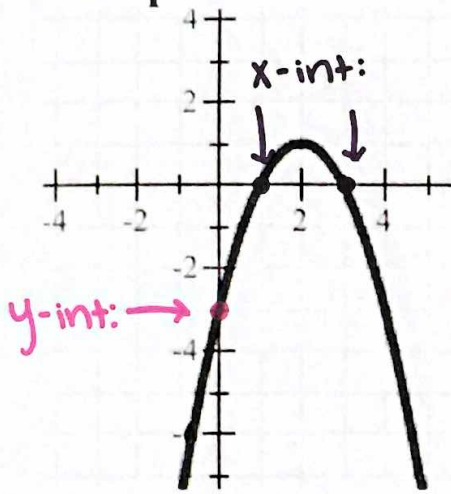
Identifying Intercepts on Quadratics

Name:

Period:

Instructions: Identify the X and Y intercepts of each graph (if there are any).

Example:



X - int:

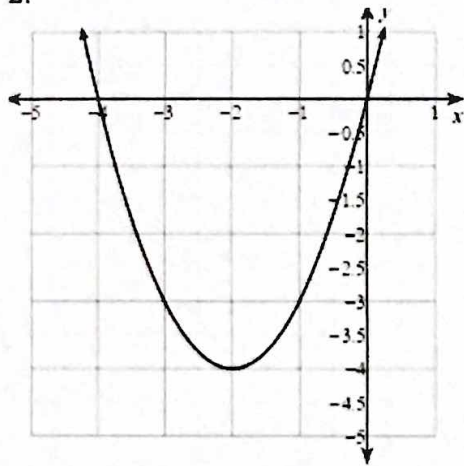
$$x = 1$$

$$x = 3$$

Y - int:

$$y = -3$$

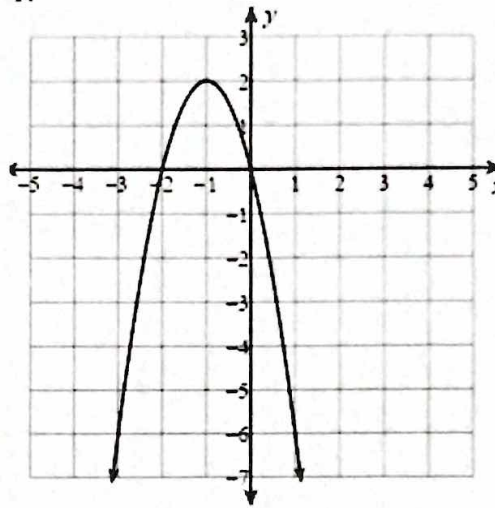
2.



X - int:

Y - int:

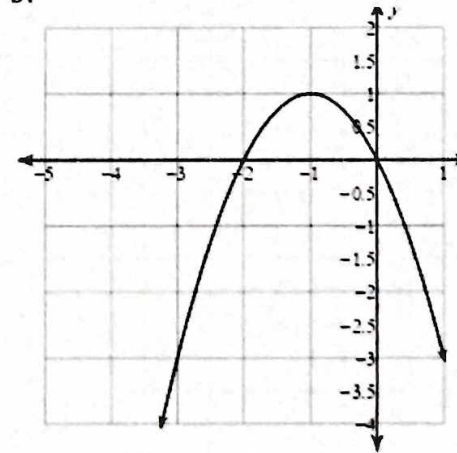
1.



X - int:

Y - int:

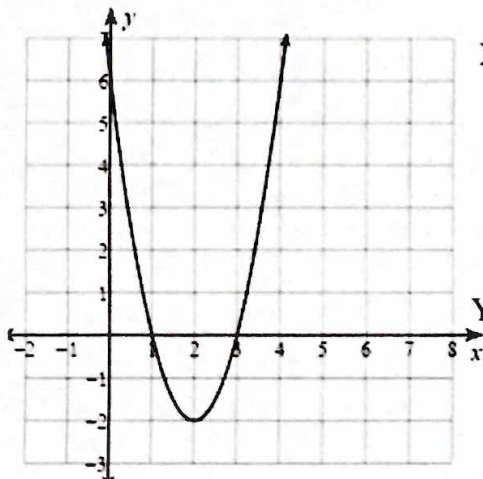
3.



X - int:

Y - int:

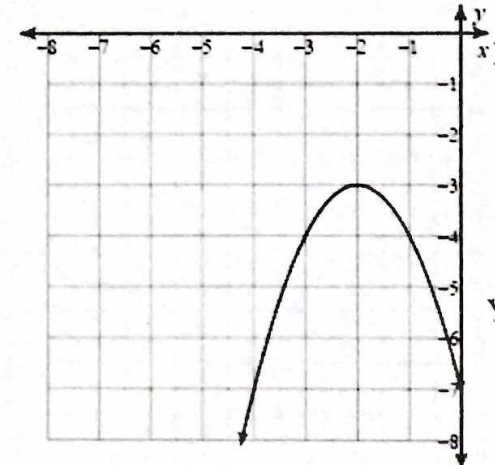
4.



X - int:

Y - int:

5.



X - int:

Y - int: