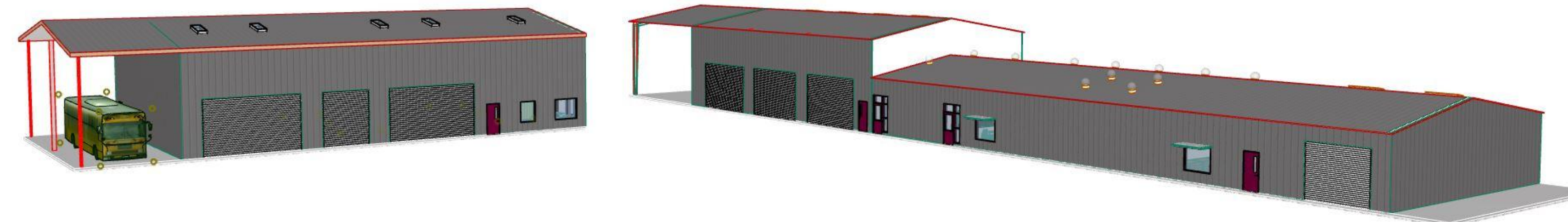


QUATTROCCHI KWOK
ARCHITECTS
Main Office:
636 Fifth Street, Santa Rosa, CA 95404
Pleasanton Office:
600 Main Street, Suite E,
Pleasanton, CA, 94566
(707) 576-0829

LUHSD TRANSPORTATION, MAINTENANCE & OPERATIONS FACILITY

850 2ND STREET, BRENTWOOD, CA 94513

LIBERTY UNION HIGH SCHOOL DISTRICT



DSA FILE NO: 7-H4

DSA APPLICATION NO: TBD

PTN: 61721-0064

BID SET FOR METAL BUILDING SYSTEM

**TRANSPORTATION,
MAINTENANCE &
OPERATIONS
FACILITY**

850 2ND STREET
BRENTWOOD, CA 94513

LIBERTY UNION HIGH
SCHOOL DISTRICT

PROJECT TEAM

OWNER

Liberty Union School District
20 Oak Street
Brentwood, CA 94513
Phone: 925-634-2166 ex 2036
Fax: 925-634-1687
Email: evolta@libertyuhd.k12.ca.us

ARCHITECT

Quattrocchi Kwok Architects
636 Fifth Street
Santa Rosa, CA 95404
Phone: 707-576-0829
Fax: 707-576-0295
Email: jimt@qka.com

CONSTRUCTION MANAGER

Lathrop Construction Associates, Inc.
4001 Park Road
Benicia, CA 94510
Phone: 707-746-8000
Direct: 707-746-4450
Email: anthony.damante@lathropconstruction.com

CIVIL ENGINEER

Carlson Barbee & Gibson, Inc.
2633 Camino Ramon, Suite 350
San Ramon, CA 94583
Phone: 925-866-0322
Email: jvogan@cbandg.com

LANDSCAPE ARCHITECT

Gretchen Stranzl McCann (GSM)
1700 Soscol Ave., Suite 23
Napa, CA 94559
Phone: 707-255-4630
Email: gretchen@gsmlainc.com

STRUCTURAL ENGINEER

ZFA Structural Engineers
1212 Fourth Street, Suite Z
Santa Rosa, CA 95404
Phone: 707-526-0992
Fax: 707-526-0217
Email: andrewz@zfa.com

MECHANICAL ENGINEER

Costa Engineers
3274 Villa Lane
Napa, CA 94558
Phone: 707-252-9177
Fax: 707-252-6473
Email: cdelcore@costaengineers.com

ELECTRICAL ENGINEER

O'Mahony & Myer (OM&M)
4340 Redwood Highway, Suite 245
San Rafael, CA 94903
Phone: 415-492-0420
Fax: 415-479-6962
Email: pcolenbrander@ommconsulting.com

FIRE PROTECTION

Axiom Engineers
22 Lower Ragsdale Dr., Suite A
Monterey, CA 93940
Phone: 831-649-8000
Email: stever@axiomengineers.com

| | |
|--|--|
| | |
| | |
| | |
| | |
| | |
| | |
| | |
| | |
| | |
| | |
| | |

ARCH PROJECT NO: 1707.00

DRAWN BY: N.T.S.

DRAWING SCALE: 61721-0064

PTN: 61721-0064

BID SET

MAY 24, 2018

SHEET TITLE

COVER SHEET

SHEET NUMBER

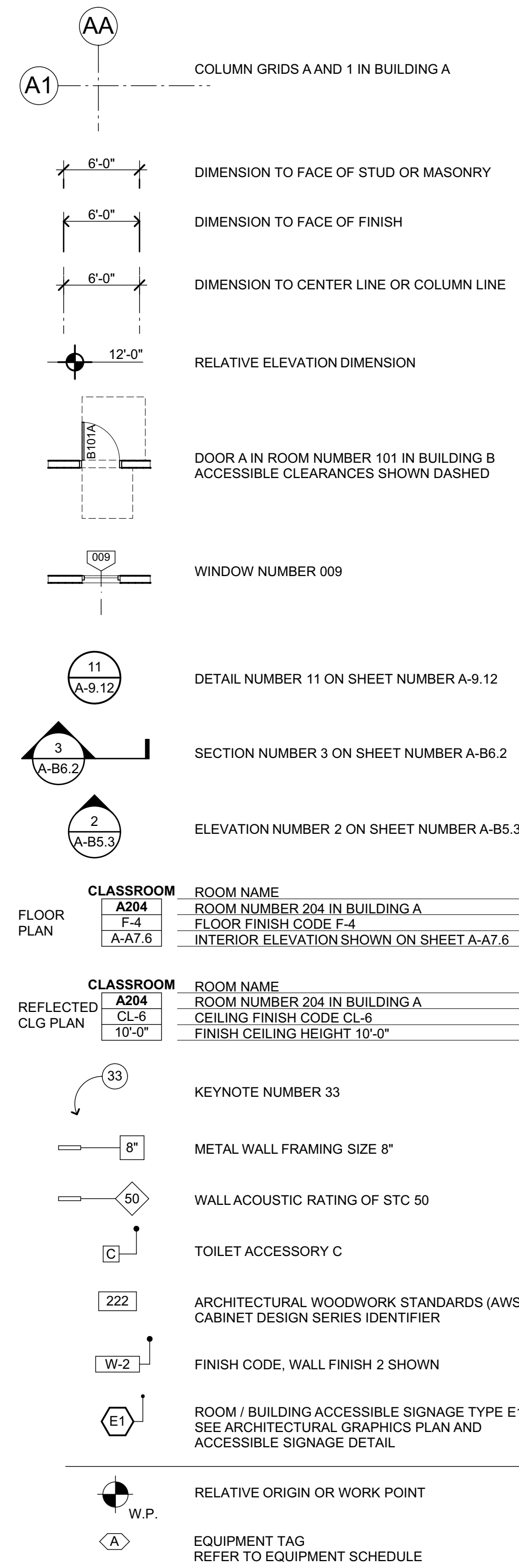
G-0.1

ABBREVIATIONS

| | | | | | |
|----------|-----------------------------|----------|---|----------|----------------------------|
| & | AND | GA | GAUGE | S | SOUTH |
| L | ANGLE | GALV | GALVANIZED | S.A.D. | SEE ARCHITECTURAL DRAWINGS |
| @ | AT | GB | GRAB BAR | S.A.V.D. | SEE AUDIO/VIDEO DRAWINGS |
| CL | CENTERLINE | GC | GENERAL CONTRACTOR | SC | SOLID CORE |
| FEET | FEET | GI | GALVANIZED IRON | S.C.D. | SEE CIVIL DRAWINGS |
| " | INCHES | GL | GLASS/ GLAZING | SCHED | SCHEDULE |
| # | PENNY | GLB | GLUE LAMINATED BEAM | SD | STORM DRAIN |
| # | POUND/ NUMBER | GND | GROUND | SECT | SECTION |
| AB | ANCHOR BOLT | GR | GRADE | S.E.D. | SEE ELECTRICAL DRAWINGS |
| ABBREV | ABBREVIATION | GYP BD | GYP SUM BOARD | SEP | SEPARATION |
| AC | ASPHALT CONCRETE | HB | HOSE BIBB | SHR | SHOWER |
| ACV | AIR CONDITIONING | HC | HOLLOW CORE | SHTG | SHEATHING |
| ACC | ACCESSIBLE | HD | HEADER | SL | SLIDING |
| ACOUS | ACOUSTICAL | HDR | HARDWOOD | S.L.D. | SEE LANDSCAPE DRAWINGS |
| AD | ACUSTICAL TILE | HDWR | HARDWARE | SM | SHEET METAL |
| AD | AREA DRAIN | HM | HOLLOW METAL | S.M.D. | SEE MECHANICAL DRAWING |
| ADJ | ADJUSTABLE | HOR | HORIZONTAL | SOV | SHUT OFF VALVE |
| A.F.F. | ABOVE FINISH FLOOR | HP | HIGH POINT | S.P.D. | SEE PLUMBING DRAWINGS |
| ALUM | ALUMINUM | HR | HOUR | SPEC | SPECIFICATION |
| ANOD | ANODIZED | HSS | HOLLOW STEEL SECTION | SPKR | SPEAKER |
| APPROX | APPROXIMATE | HT | HEIGHT | SQ | SQUARE |
| ARCH | ARCHITECTURAL | HTG | HEATING | SS | STAINLESS STEEL |
| ASPH | ASPHALT | HVAC | HEATING, VENTILATING, AIR-CONDITIONING | S.S.D. | SEE STRUCTURAL DRAWINGS |
| | | | | S.T.H.D. | SEE TEE DRAWINGS |
| | | | | STA | STATION |
| BD | BOARD | ID | INSIDE DIAMETER | STD | STANDARD |
| BITUM | BITUMINOUS | INSUL | INSULATION | STL | STEEL |
| BLDG | BUILDING | INT | INTERIOR | STOR | STORAGE |
| BLK | BLOCK | INTEG | INTEGRAL | STRUCT | STRUCTURAL |
| BLKG | BLOCKING | INTERMED | INTERMEDIATE | SUSP | SUSPENDED |
| BM | BEAM | INV | INVERT | SYM | SYMMETRICAL |
| BOT | BOTTOM | | | T | TREAD |
| BO | BY OWNER | JH | JOIST HANGER | THRU | THROUGH |
| BREK | BREAK | JST | JOIST | T&B | TOP & BOTTOM |
| BRG | BEARING | JT | JOINT | TC | TOP OF CURB |
| BTWN | BETWEEN | TEL | TELEPHONE | TEL | TELEPHONE |
| BU | BUILT-UP | TER | TERRAZZO | TER | TERRAZZO |
| BUR | BUILT-UP ROOFING | KP | KICK PLATE | T&G | TONGUE & GROOVE |
| | | | | TH | THICK |
| CAB | CABINET | LAB | LABORATORY | THRU | THROUGH |
| CB | CATCH BASIN | LAM | LAMINATE | TJ | TOOL JOINT |
| CBU | CEMENTITIOUS BACKER UNIT | LAV | LAVATORY | TN | TOE NAIL |
| CEM | CEMENT | LL | LOW POINT | T.O.D. | TOP OF DECK |
| CER | CERAMIC | LP | LOW POINT | T.O.P. | TOP OF PLATE |
| CEI | CEILING | LT | LIGHT | T.O.R. | TOP OF ROOF |
| CL | CLOSE CENTER LINE | | | T.O.W. | TOP OF WALL |
| CLG | CEILING | MAT | MATERIAL | T.P. | TOP OF PAVEMENT |
| CLR | CLEAR | MAX | MAXIMUM | TRN | TRANSOM |
| CLS | CLOSURE | MC | MACHINE BOLT | TRANS | TRANSIENT |
| CMU | CONCRETE MASONRY UNIT | MCH | MEDICINE CABINET | TS | TUBE STEEL |
| CO | CLEANOUT | MED | MEDIUM | TUB | TUBULAR |
| COL | COLUMN | MEMB | MEMBRANE | TV | TELEVISION |
| COMB | COMBINATION | MFR | MANUFACTURER | TW | TACK WALL |
| COMP | COMPOSITION | MH | MANHOLE | TYP | TYPICAL |
| CONC | CONCRETE | MIN | MINIMUM | UNF | UNFINISHED |
| CONN | CONNECTION | MIR | MIRROR | U.O.N. | UNLESS OTHERWISE NOTED |
| CONST | CONSTRUCTION | MISC | MISCELLANEOUS | URINAL | URINAL |
| CONT | CONTINUOUS | MO | MASONRY OPENING | UTIL | UTILITY |
| CONTR | CONTRACTOR | MOD | MODULAR | VB | VAPOR BARRIER |
| CT | CENTER | MR | MOISTURE RESISTANT | VC | VERTICAL |
| CTR | COUNTERSINK | MTD | MOUNTED | VERT | VERTICAL |
| CTS | CUSTOMER | MTL | METAL | VEST | VESTIBULE |
| CUST | CUSTOMER | MUL | MULLION | VF | VERIFY IN FIELD |
| CW | COLD WATER | N | NORTH | V.F. | VENT THROUGH ROOF |
| | | (N) | NEW | VTR | VINYL WALL COVERING |
| | | NAT | NATURAL | W | WEST |
| DBL | DOUBLE | N.I.C. | NOT IN CONTRACT | W | WITH |
| DEPT | DEPARTMENT | NO | NUMBER | WC | WATER CLOSET |
| DET | DETAIL | NOM | NOMINAL | WD | WOOD |
| DF | DRINKING FOUNTAIN | N.T.S. | NOT TO SCALE | WDW | WINDOW |
| DG | DECOMPOSED | O | OVER | WH | WATER HEATER |
| DJ | DRAIN INLET | OA | OVERALL | WITHOUT | WITHOUT |
| DIA | DIAMETER | OBS | OBSOLETE | WP | WATER PROOF |
| DIAG | DIAGONAL | OC | ON CENTER | W.P. | WORK POINT |
| DIM | DIMENSION | OD | OUTSIDE DIAMETER | WR | WATER RESISTANT |
| DISP | DISPOSAL | OF | OVERFLOW | WSCOT | WAINSCOT |
| DIV | DIVISION | OFCI | OWNER FURNISHED/ RECONSTRUCTED/ INSTALLED | WT | WEIGHT |
| DN | DOWN | O.L.F. | OCCUPANT LOAD FACTOR | YD | YARD |
| DO | DOOR OPENING | OFF | OFFICE | | |
| DIR | DIRECTLY | OPN | OPENING | | |
| DR | DOOR | OPP | OPPOSITE | | |
| DS | DOWN SPOUT | OVHD | OVERHEAD | | |
| DSP | DRY STAND PIPE | PC | PORTLAND CEMENT | | |
| DT | DRAIN TILE | P.C.F. | POUNDS PER CUBIC FOOT | | |
| DW | DISHWASHER | PDA | POWER DRIVEN ANCHOR | | |
| DWG | DRAWING | PERF | PERFORATED | | |
| DWR | DRAWER | PH | PLATE HEIGHT | | |
| | | PL | PLATE | | |
| E | EAST | P/L | PROPERTY LINE | | |
| (E) | EXISTING | PLAM | PLASTIC LAMINATE | | |
| EA | EACH | PLAS | PLASTER/ PLASTIC | | |
| EB | EXPANSION BOLT | PLF | POUNDS PER LINEAL FOOT | | |
| EE | EACH END | PLYWD | PLYWOOD | | |
| EF | EXHAUST FAN | P.O.C. | POINT OF CONTACT | | |
| EJ | EXPANSION JOINT | PR | PAIR | | |
| EL | ELEVATION GRADE | PROP | PROPERTY | | |
| ELEC | ELECTRICAL | PSF | POUNDS PER SQUARE FOOT | | |
| ELEV | ELEVATION | PSI | POUNDS PER SQUARE INCH | | |
| EMER | EMERGENCY | PT | POINT | | |
| EMT | ELECTRIC METALLIC TUBING | PTDF | PRESSURE TREATED DOUGLAS FIR | | |
| ENCL | ENCLOSURE | PTN | PARTITION | | |
| EP | ELECTRIC PANEL | PTR | PAPER TOWEL RECEPTACLE | | |
| EQ | EQUAL | PVC | POLYVINYL CHLORIDE | | |
| EQUIP | EQUIPMENT | PVMT | PAVEMENT | | |
| EQUIV | EQUIVALENT | R | RISER | | |
| ES | EACH SIDE | R / RAD | RADIUS | | |
| EW | EACH WAY | RD | ROOF DRAIN | | |
| EXH | EXHAUST | REF | REFERENCE | | |
| EXIST | EXISTING | REFR | REFRIGERATOR | | |
| EXP | EXPANSION | REG | REGULAR | | |
| EXT | EXTERIOR | REIN | REINFORCED | | |
| | | RH | ROOF HATCH | | |
| F | FACE | RHMS | ROUND HEAD MACHINE SCREW | | |
| FA | FIRE ALARM | RM | ROOM | | |
| FCO | FLOOR CLEAN OUT | RO | ROUGH OPENING | | |
| FD | FLOOR DRAIN | RWL | RAIN WATER LEADER | | |
| FDN | FOUNDATION | RWD | REDWOOD | | |
| FE | FIRE EXTINGUISHER | | | | |
| FEC | FIRE EXTINGUISHER CABINET | | | | |
| FF | FINISH FLOOR | | | | |
| FG | FINISH GRADE | | | | |
| FGL | FIBERGLAS | | | | |
| FH | FIRE HYDRANT | | | | |
| FHMS | FLAT HEAD MACHINE SCREW | | | | |
| FHS | FIRE HOSE STATION | | | | |
| FHWS | FLAT HEAD WOOD SCREW | | | | |
| FIN | FINISH | | | | |
| FL | FLOOR LINE | | | | |
| FLASH | FLASHING | | | | |
| FLUOR | FLUORESCENT | | | | |
| FLOOR | FLOOR | | | | |
| FM / FOM | FACE OF MASONRY | | | | |
| FN | FACE NAIL | | | | |
| FOC | FACE OF CONCRETE | | | | |
| FOF | FACE OF FINISH | | | | |
| FOS | FACE OF STUD | | | | |
| FRMG | FRAMING | | | | |
| FR | FIRE-RESISTANT | | | | |
| FRP | FIBERGLASS REINFORCED PANEL | | | | |
| FT | FEET | | | | |
| FTG | FOOTING | | | | |
| FURR | FURRING | | | | |

LEGEND

ALL NOTES AND SYMBOLS ARE INTENDED TO APPLY AT ALL OTHER LOCATIONS OF SIMILAR GRAPHIC REPRESENTATION. SUCH INDICATIONS MAY BE LIMITED TO PROMOTE CLARITY. NO LIMITATION OF APPLICATION IS INTENDED EXCEPT AS SPECIFICALLY NOTED.



GENERAL NOTES

- ALL WORK IS SHOWN, DESCRIBED OR SPECIFIED IN THE DRAWINGS INDEXED ON THIS PAGE OR IN THE SPECIFICATIONS. ALL WORK NOT INDICATED AS EXISTING (E) IS NEW.
- ALL FRAMING DIMENSIONS ARE TO FACE OF STUD UNLESS NOTED OTHERWISE.
- DO NOT SCALE DRAWINGS.
- VERIFY ALL DIMENSIONS WHERE WORK INVOLVES FRAMING FOR WINDOWS, DOORS, OR CABINETS.
- ONLY WORK SO NOTED IS NOT IN CONTRACT (N.I.C.) ALL N.I.C. ITEMS ARE NOT PART OF DSA APPROVAL.
- GOVERNING CODES:
CALIFORNIA CODE OF REGULATIONS TITLE 24 BUILDING STANDARDS CODE:
PART 1 2016 CALIFORNIA ADMINISTRATIVE CODE (CAC), PART 1, TITLE 24 CCR
PART 2 2016 CALIFORNIA BUILDING CODE (CBC), PART 2, TITLE 24 CCR
(2015 INTERNATIONAL BUILDING CODE, VOL. 1 & 2, AND 2016 CALIFORNIA AMENDMENTS)
PART 3 2016 CALIFORNIA ELECTRICAL CODE (CEC), PART 3, TITLE 24 CCR
(2014 NATIONAL ELECTRICAL CODE AND 2016 CALIFORNIA AMENDMENTS)
PART 4 2016 CALIFORNIA MECHANICAL CODE (CMC), PART 4, TITLE 24 CCR
(2015 IAPMO UNIFORM MECHANICAL CODE AND 2016 CALIFORNIA AMENDMENTS)
PART 5 2016 CALIFORNIA PLUMBING CODE (CPC), PART 5, TITLE 24 CCR
(2015 IAPMO UNIFORM PLUMBING CODE AND 2016 CALIFORNIA AMENDMENTS)
PART 6 2016 CALIFORNIA ENERGY CODE (CEC), PART 6, TITLE 24 CCR
PART 9 2016 CALIFORNIA FIRE CODE (CFC), PART 9, TITLE 24 CCR
(2015 INTERNATIONAL FIRE CODE AND 2016 CALIFORNIA AMENDMENTS)
PART 10 2016 CALIFORNIA EXISTING BUILDING CODE (CEBC), PART 10, TITLE 24 CCR
(2015 INTERNATIONAL EXISTING BUILDING CODE AND 2016 CALIFORNIA AMENDMENTS)
PART 11 2016 CALIFORNIA GREEN BUILDING STANDARDS CODE (CAL-GREEN), PART 11, TITLE 24 CCR
PART 12 2016 CALIFORNIA REFERENCED STANDARDS CODE, PART 12, TITLE 24 CCR
- TITLE 19 CCR, PUBLIC SAFETY CODE, STATE FIRE MARSHAL REGULATIONS
2010 ADA STANDARDS FOR ACCESSIBILITY DESIGN
2013 ASME A17.1/CSA B44-13 SAFETY CODE FOR ELEVATORS AND ESCALATORS
- STANDARD AND GUIDES:
NFPA 13 INSTALLATION OF FIRE SPRINKLER SYSTEMS (CAMENDED) 2016 EDITION
NFPA 14 INSTALLATION OF STANDPIPE AND HOSE SYSTEMS 2013 EDITION
NFPA 17 DRY CHEMICAL EXTINGUISHING SYSTEMS 2013 EDITION
NFPA 17A WET CHEMICAL FIRE EXTINGUISHING SYSTEMS 2013 EDITION
NFPA 20 INSTALLATION OF STATIONARY PUMPS FOR FIRE PROTECTION 2013 EDITION
NFPA 22 STANDARD FOR WATER TANKS FOR PRIVATE FIRE PROTECTION 2013 EDITION
NFPA 24 STANDARD FOR THE INSTALLATION OF PRIVATE FIRE SERVICE MAINS AND THEIR APPURTENANCES 2016 EDITION
NFPA 25 CALIFORNIA EDITION - TESTING, MAINTENANCE OF WATER-BASED FIRE PROTECTION SYSTEMS 2013 EDITION
NFPA 72 NATIONAL FIRE ALARM AND SIGNALING CODE (CAMENDED) 2016 EDITION
NFPA 80 STANDARD FOR FIRE DOORS AND OTHER OPENING PROTECTIVES 2016 EDITION
NFPA 110 EMERGENCY AND STANDBY POWER SYSTEMS 2016 EDITION
NFPA 170 STANDARD FOR FIRE SAFETY AND EMERGENCY SYMBOLS 2015 EDITION
NFPA 2001 STANDARD ON CLEAN AGENT FIRE EXTINGUISHING SYSTEMS 2015 EDITION
UL 300 STANDARD FOR FIRE TESTING OF FIRE EXTINGUISHING SYSTEMS FOR PROTECTION OF COMMERCIAL COOKING EQUIPMENT 2005 (R2010)
UL 464 AUDIBLE SIGNALING DEVICES FOR FIRE ALARM AND SIGNALING SYSTEMS, INCLUDING ACCESSORIES 2003 EDITION
UL 521 STANDARD FOR HEAT DETECTORS FOR FIRE PROTECTIVE SIGNALING SYSTEMS 1999 EDITION
UL 1971 STANDARD FOR SIGNALING DEVICES FOR THE HEARING IMPAIRED 2002 EDITION
ICC 300 STANDARD FOR BLEACHERS, FOLDING AND TELESCOPIC SEATING, AND GRANDSTANDS 2012 EDITION
- A COPY OF TITLE 24 PARTS 1-5 SHALL BE KEPT ON THE JOB AT ALL TIMES.
- IN ACCORDANCE WITH TITLE 24 PART 1 CHAPTER 4: THE ADMINISTRATIVE REGULATIONS FOR THE DIVISION OF THE STATE ARCHITECT STRUCTURAL SAFETY (DAS/SS):
• ALL CONSTRUCTION CHANGE ORDERS AND ADDENDAS SHALL BE SIGNED BY THE ARCHITECT AND THE OWNER AND APPROVED BY DSA CONSTRUCTION CHANGE DOCUMENTS NOT VALID UNTIL APPROVED BY DSA (4-338)
• ALL TESTS SHALL CONFORM TO THE REQUIREMENTS OF SECTION 4-335 AND APPROVED T & S SHEET (DSA-10)
• TESTS OF MATERIALS AND TESTING LAB SHALL BE IN ACCORDANCE WITH SECTION 4-335 AND THE DISTRICT SHALL EMPLOY AND PAY THE LAB. COSTS OF RE-TEST MAY BE BACKCHARGED TO THE CONTRACTOR.
• DSA SHALL BE NOTIFIED AT THE START OF CONSTRUCTION AND PRIOR TO THE PLACEMENT OF CONCRETE IN ACCORDANCE WITH SECTION 4-331
• INSPECTOR SHALL BE APPROVED BY DSA. INSPECTION SHALL BE IN ACCORDANCE WITH SECTION 4-333(b). THE DUTY OF THE INSPECTOR SHALL BE IN ACCORDANCE WITH SECTION 4-342
• SUPERVISION OF CONSTRUCTION BY DSA SHALL BE IN ACCORDANCE WITH SECTION 4-334.
• VERIFIED REPORTS SHALL BE SUBMITTED BY CONTRACTORS, INSPECTORS (DSA - 6), ARCHITECTS AND ENGINEERS (DSA 6A) IN ACCORDANCE WITH SECTIONS 4-336 AND 4-343.
• THE ARCHITECT AND THE STRUCTURAL ENGINEER SHALL PERFORM THEIR DUTIES IN ACCORDANCE WITH SECTIONS 4-333(a) AND 4-341.
• THE CONTRACTOR SHALL PERFORM HIS DUTIES IN ACCORDANCE WITH SECTION 4-343.
- FOOD HANDLING FACILITIES SHALL COMPLY WITH ALL LOCAL HEALTH REQUIREMENTS AND CALIFORNIA UNIFORM RETAIL FOOD FACILITIES LAW.
- THE INTENT OF THE DRAWINGS AND SPECIFICATIONS IS THAT THE WORK OF ALTERATION, REHABILITATION OR RECONSTRUCTION IS TO BE IN ACCORDANCE WITH TITLE 24, C.C.R. SHOULD ANY EXISTING CONDITIONS BE DISCOVERED WHICH IS NOT COVERED BY THE CONTRACT DOCUMENTS WHERE IN THE FINISHED WORK, WILL NOT COMPLY WITH SAID TITLE 24 C.C.R. A CONSTRUCTION CHANGE DOCUMENT DETAILING AND SPECIFYING THE REQUIRED REPAIR WORK SHALL BE SUBMITTED TO AND APPROVED BY DSA BEFORE PROCEEDING WITH THE REPAIR WORK. (TITLE 24 PART 1, SECTION 4-338(g))
- COMPLIANCE WITH CFC CHAPTER 33, FIRE SAFETY DURING CONSTRUCTION AND DEMOLITION AND CBC CHAPTER 33, SAFETY DURING CONSTRUCTION SHALL BE ENFORCED.
- EMERGENCY VEHICLE ACCESS ROADS AND ON-SITE FIRE HYDRANTS SHALL BE IN SERVICE AND OPERABLE PRIOR TO LOADING THE SITE WITH COMBUSTIBLE MATERIALS.
- GRADING PLANS, DRAINAGE IMPROVEMENTS, ROAD AND ACCESS REQUIREMENTS, AND ENVIRONMENTAL HEALTH CONSIDERATIONS SHALL COMPLY WITH ALL LOCAL ORDINANCES.

SHEET INDEX

| | |
|---------------------|-------------------------|
| PROJECT INFORMATION | |
| G-0.1 | COVER SHEET |
| G-0.2 | ABBREVIATIONS AND NOTES |

| | |
|--------------------|---|
| ARCHITECTURAL SITE | |
| A-1.1 | SITE PLAN |
| ARCHITECTURAL | |
| A-A2.1 | M&O / TRANS. "BLDG A" FLOOR PLANS |
| A-B2.1 | BUS SHOP "BLDG B" FLOOR PLANS |
| A-A3.1 | M&O / TRANS. "BLDG A" REFLECTED CEILING PLANS |
| A-B3.1 | BUS SHOP "BLDG B" REFLECTED CEILING PLANS |
| A-A4.1 | M&O / TRANS. "BLDG A" ROOF PLAN |
| A-B4.1 | BUS SHOP "BLDG B" ROOF PLAN |
| A-A5.1 | M&O / TRANS. "BLDG A" EXTERIOR ELEVATIONS |
| A-B5.1 | BUS SHOP "BLDG B" EXTERIOR ELEVATIONS |
| A-A6.1 | M&O / TRANS. "BLDG A" SECTIONS |
| A-B6.1 | BUS SHOP "BLDG B" SECTIONS |

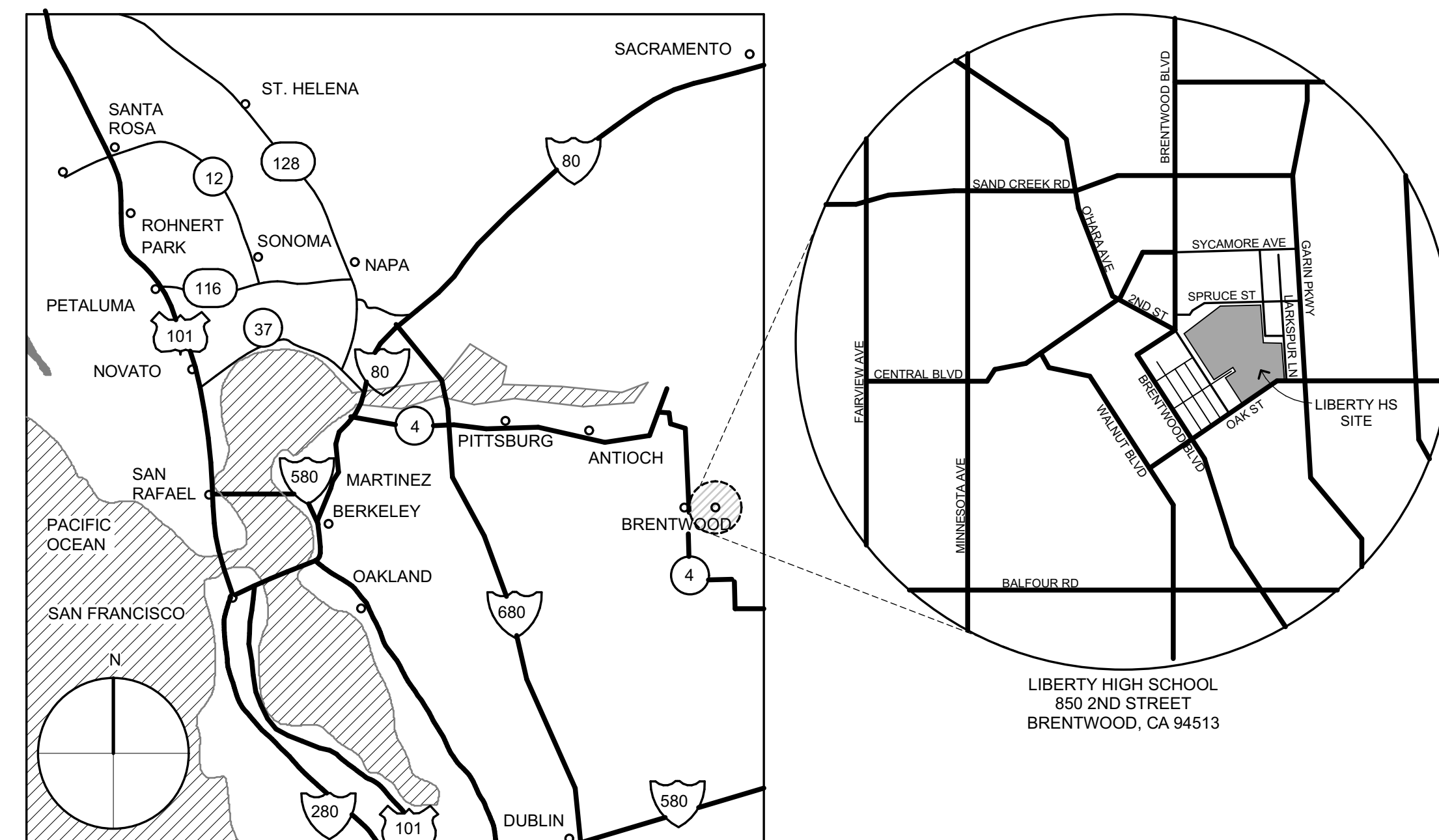
PROJECT DESCRIPTION

CONSTRUCTION OF PRE-ENGINEERED METAL BUILDINGS FOR LIBERTY UNION HIGH SCHOOL DISTRICT MAINTENANCE & OPERATIONS AND TRANSPORTATION SERVICES. COMPLETE WITH ALL APURTENANCE AS SHOWN AND DESCRIBED IN PLANS AND SPECIFICATIONS.

DEFERRED APPROVALS

NONE.

VICINITY MAP



TRANSPORTATION, MAINTENANCE & OPERATIONS FACILITY

850 2ND STREET
BRENTWOOD, CA 94513

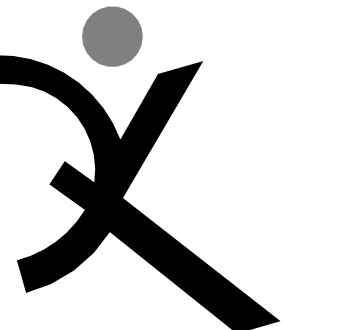
LIBERTY UNION HIGH SCHOOL DISTRICT

| | |
|------------------|------------|
| ARCH PROJECT NO: | 1707.00 |
| DRAWN BY: | |
| DRAWING SCALE: | N.T.S. |
| PTN: | 61721-0064 |
| BID SET | |
| MAY 24, 2018 | |
| SHEET TITLE | |

ABBREVIATIONS AND NOTES

SHEET NUMBER

G-0.2

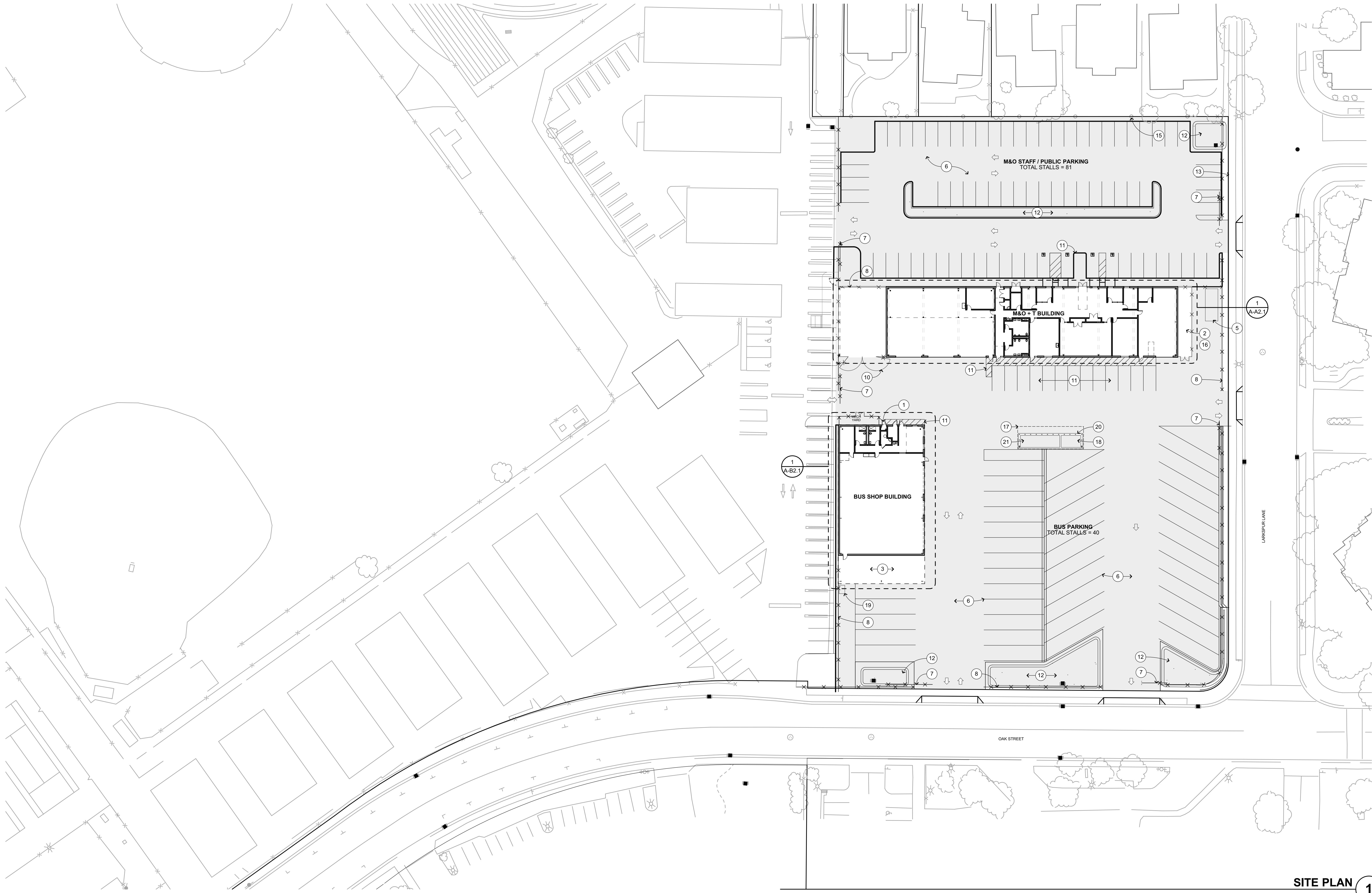


QUATTROCCHI KWOK
ARCHITECTS
Main Office:
636 Fifth Street, Santa Rosa, CA 95404
Pleasanton Office:
600 Main Street, Suite E,
Pleasanton, CA, 94566
(707) 576-0829

**TRANSPORTATION,
MAINTENANCE &
OPERATIONS
FACILITY**

850 2ND STREET
BRENTWOOD, CA 94513

LIBERTY UNION HIGH
SCHOOL DISTRICT



SITE PLAN 1
1" = 30'

BIM Server: archiver - BIM Server: 21171707.00_LJHSD_TRANS M and O 5/23/2018:12:14

| KEYPLAN | SITE PLAN LEGEND | SITE PLAN GENERAL NOTES | SITE PLAN KEYNOTES | | |
|--|--|--|--|--|--|
| | | <p>ADD NOTES FROM Z101004 AT TIME OF DSA SUBMITTAL</p> | <p>NOT ALL KEYNOTES MAY APPLY TO THIS SHEET</p> <table border="0"> <tr> <td style="vertical-align: top;"> <ul style="list-style-type: none"> 14 M&O SERVICE TRUCKS AND VEHICLES (8 Trucks, 4 Trailers, 1 Box Van) 15 (E) FENCE 16 TRASH BIN YARD 17 ROOF CANOPY ABOVE 18 GAS TANK WITH 5,000 GALON CAPCITY 19 WASTE LIQUID STORORAGE (500 GAL) 20 6" CONCRETE PAD W/ BOLLARDS 21 DIESEL FUEL TANK (10,000 GAL) </td> <td style="vertical-align: top;"> <ul style="list-style-type: none"> 1 FIRE SPRINKLER RISER, S.P.D. 2 MECHANICAL YARD 3 BUS WASH BAY, S.P.D. 4 ELECTRICAL ITEM, S.E.D. 5 EQUIPMENT ITEM (RECYCLING COMPACTOR) 6 AC PAVING & PARKING STRIPING TYP. 7 MOTORIZED CHAINLINK GATE TYP. 8 8'-0" HIGH CHAINLINK NON-CLIMBABLE FENCE, TYP. 10 PAIR OF 10'-0" CHAINLINK GATES, MANUALLY OPERATED 11 CONCRETE PAVING 12 BIOSWALE WITH CONCRETE CURB PERIMETER, S.C.D. 13 (E) CONCRETE SIDEWALK </td> </tr> </table> | <ul style="list-style-type: none"> 14 M&O SERVICE TRUCKS AND VEHICLES (8 Trucks, 4 Trailers, 1 Box Van) 15 (E) FENCE 16 TRASH BIN YARD 17 ROOF CANOPY ABOVE 18 GAS TANK WITH 5,000 GALON CAPCITY 19 WASTE LIQUID STORORAGE (500 GAL) 20 6" CONCRETE PAD W/ BOLLARDS 21 DIESEL FUEL TANK (10,000 GAL) | <ul style="list-style-type: none"> 1 FIRE SPRINKLER RISER, S.P.D. 2 MECHANICAL YARD 3 BUS WASH BAY, S.P.D. 4 ELECTRICAL ITEM, S.E.D. 5 EQUIPMENT ITEM (RECYCLING COMPACTOR) 6 AC PAVING & PARKING STRIPING TYP. 7 MOTORIZED CHAINLINK GATE TYP. 8 8'-0" HIGH CHAINLINK NON-CLIMBABLE FENCE, TYP. 10 PAIR OF 10'-0" CHAINLINK GATES, MANUALLY OPERATED 11 CONCRETE PAVING 12 BIOSWALE WITH CONCRETE CURB PERIMETER, S.C.D. 13 (E) CONCRETE SIDEWALK |
| <ul style="list-style-type: none"> 14 M&O SERVICE TRUCKS AND VEHICLES (8 Trucks, 4 Trailers, 1 Box Van) 15 (E) FENCE 16 TRASH BIN YARD 17 ROOF CANOPY ABOVE 18 GAS TANK WITH 5,000 GALON CAPCITY 19 WASTE LIQUID STORORAGE (500 GAL) 20 6" CONCRETE PAD W/ BOLLARDS 21 DIESEL FUEL TANK (10,000 GAL) | <ul style="list-style-type: none"> 1 FIRE SPRINKLER RISER, S.P.D. 2 MECHANICAL YARD 3 BUS WASH BAY, S.P.D. 4 ELECTRICAL ITEM, S.E.D. 5 EQUIPMENT ITEM (RECYCLING COMPACTOR) 6 AC PAVING & PARKING STRIPING TYP. 7 MOTORIZED CHAINLINK GATE TYP. 8 8'-0" HIGH CHAINLINK NON-CLIMBABLE FENCE, TYP. 10 PAIR OF 10'-0" CHAINLINK GATES, MANUALLY OPERATED 11 CONCRETE PAVING 12 BIOSWALE WITH CONCRETE CURB PERIMETER, S.C.D. 13 (E) CONCRETE SIDEWALK | | | | |

ARCH PROJECT NO: 1707.00

DRAWN BY: AS NOTED
DRAWING SCALE: 61721-0064
PTN:

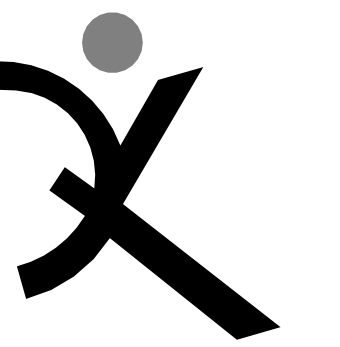
BID SET
MAY 24, 2018

SHEET TITLE

SITE PLAN

SHEET NUMBER

A-1.1

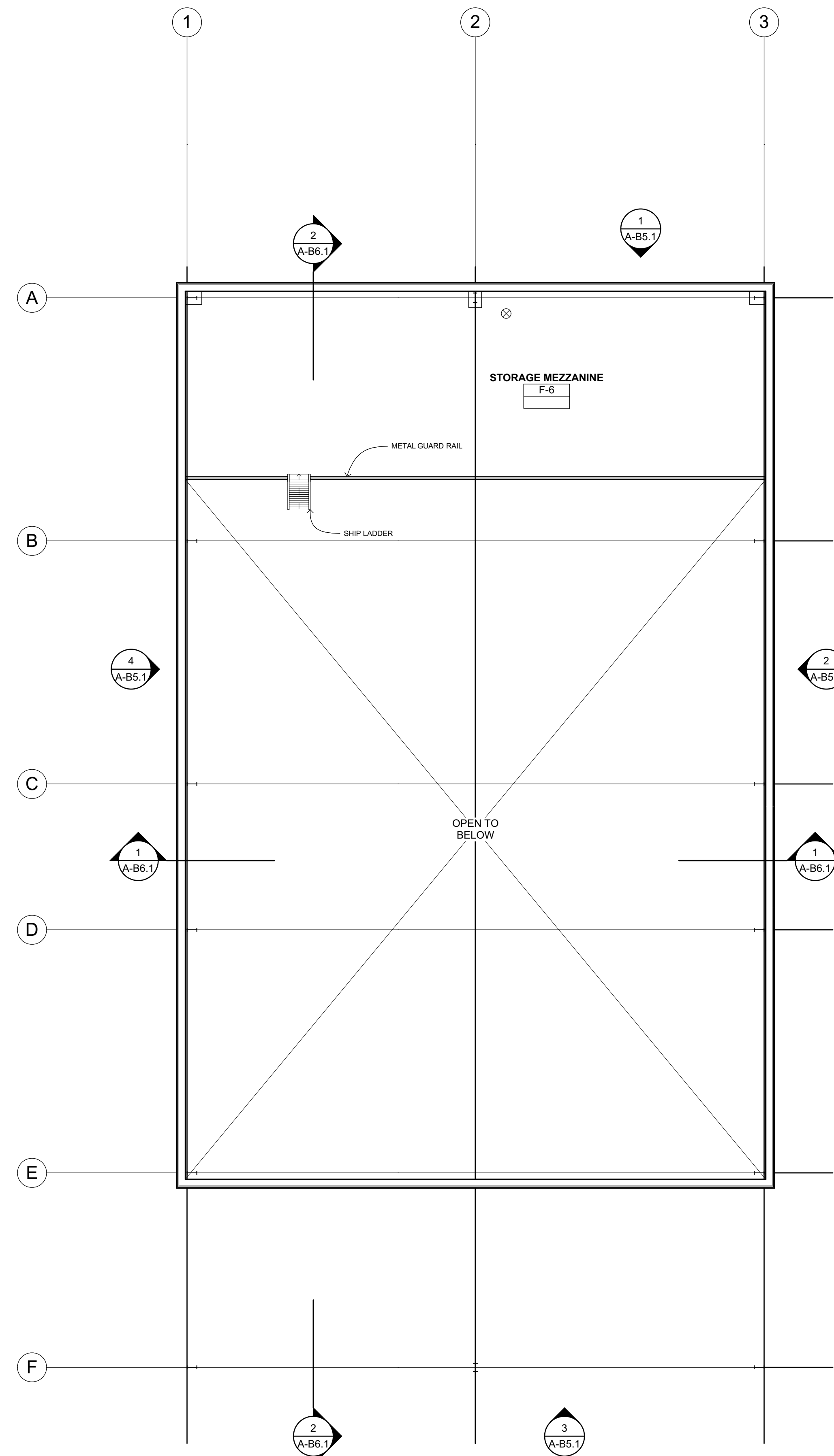


QUATTROCCHI KWOK
ARCHITECTS
Main Office:
636 Fifth Street, Santa Rosa, CA 95404
Pleasanton Office:
600 Main Street, Suite E,
Pleasanton, CA 94566
(707) 576-0829

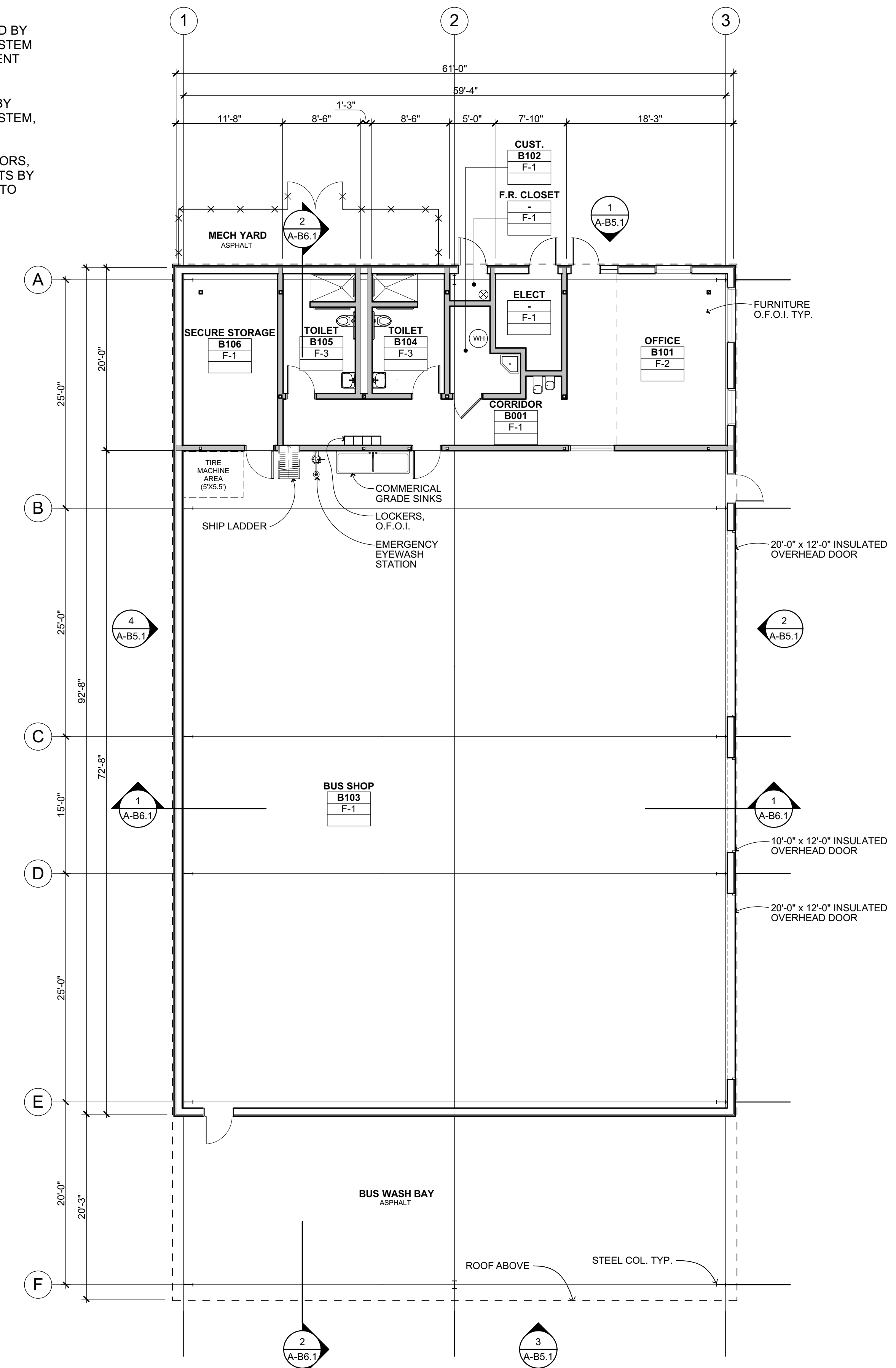
NOTE:
MECHANICAL EQUIPMENT TO BE SUPPORTED BY METAL BUILDING STRUCTURAL FRAMING SYSTEM TYP. SEE MECHANICAL PLANS FOR EQUIPMENT INFORMATION AND WEIGHT.

FIRE SPRINKLER PIPES TO BE SUPPORTED BY METAL BUILDING STRUCTURAL FRAMING SYSTEM. SEE FIRE PROTECTION DRAWINGS.

WINDOWS, DOORS, OVERHEAD ROLL-UP DOORS, SUNSHADE AWNING AND TUBULAR SKYLIGHTS BY OTHERS. METAL BUILDING MANUFACTURER TO PROVIDE FRAMED OPENINGS.

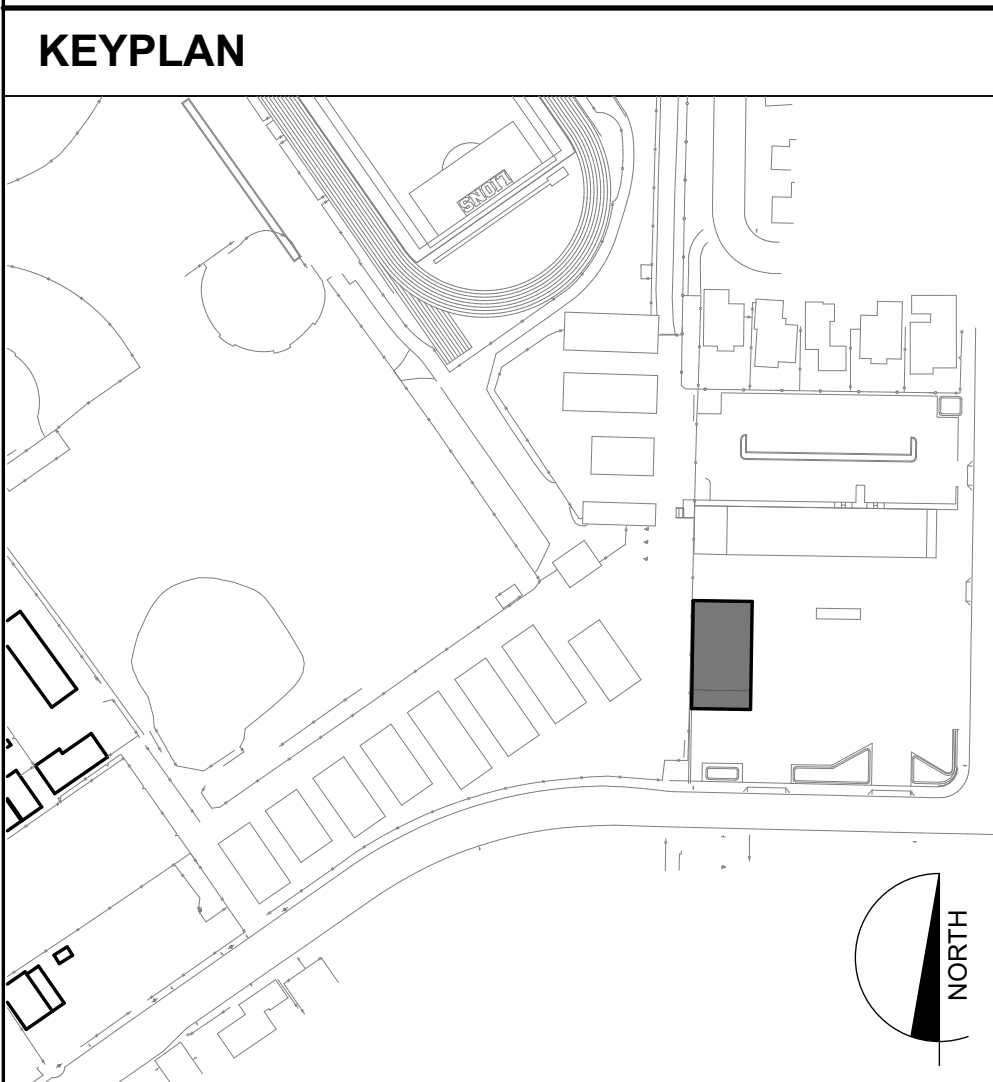


BUS SHOP MEZZANINE FLOOR PLAN 2
1/8" = 1'-0"



BUS SHOP FLOOR PLAN 1
1/8" = 1'-0"

BIM Server: archiserver - BIM Server 211707.00 LHSB TRANS M and O 5/23/2018 12:14



| WALL TYPE LEGEND |
|------------------|
| |

| FLOOR FINISH CODES |
|------------------------------|
| F-1 SEALED CONCRETE |
| F-2 CARPET |
| F-3 WALK-OFF CARPET |
| F-4 RESILIENT SHEET FLOORING |
| F-5 EPOXY FLOORING |
| F-6 CDX GRADE PLYWOOD |

| FLOOR PLAN GENERAL NOTES |
|--------------------------|
| |

| FLOOR PLAN KEYNOTES |
|--|
| NOT ALL KEYNOTES MAY APPLY TO THIS SHEET |

**TRANSPORTATION,
MAINTENANCE &
OPERATIONS
FACILITY**

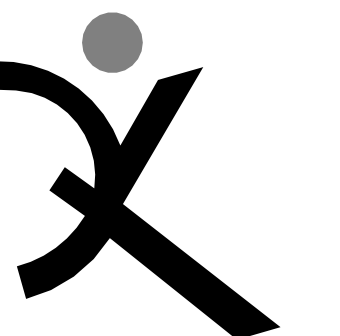
850 2ND STREET
BRENTWOOD, CA 94513

LIBERTY UNION HIGH
SCHOOL DISTRICT

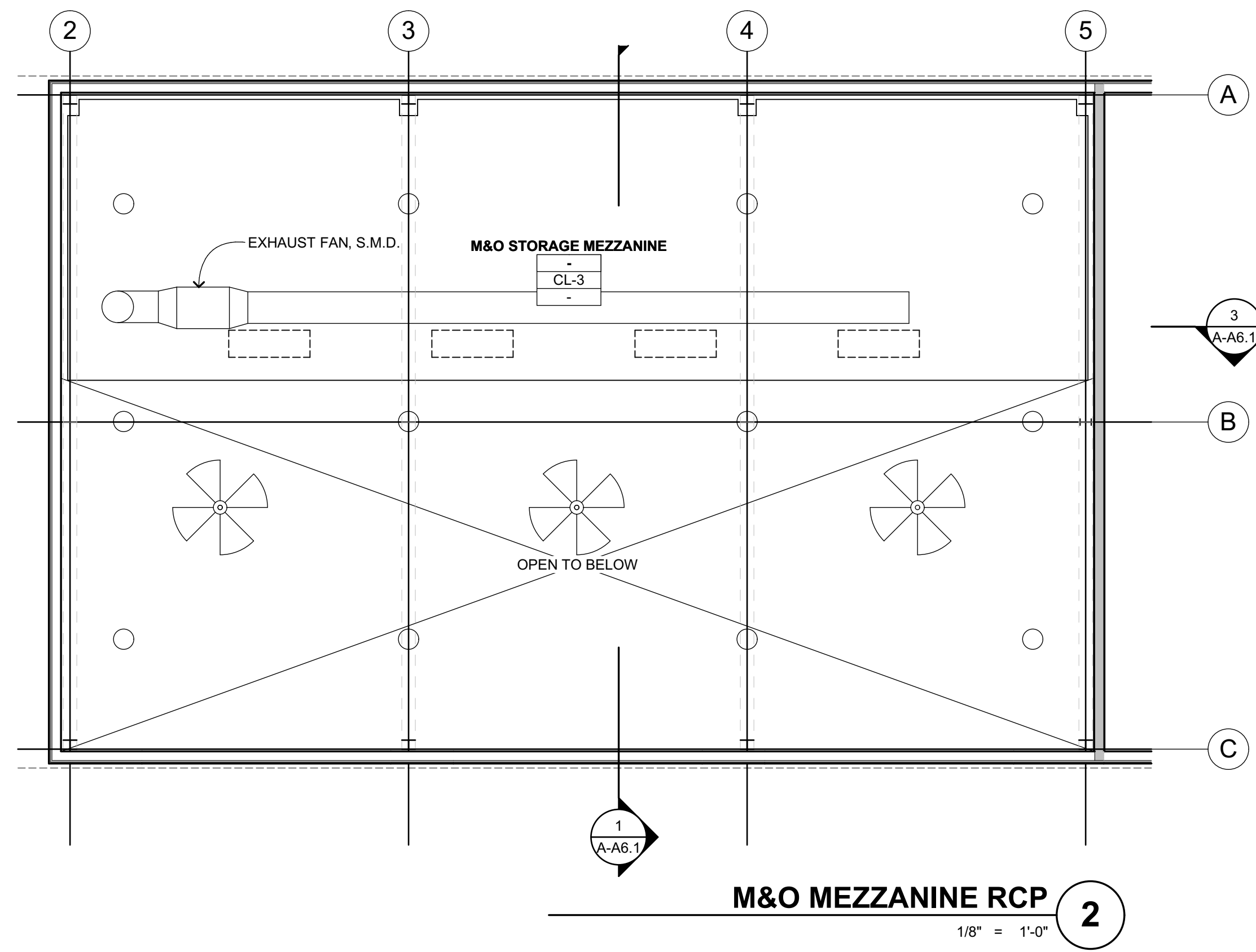
ARCH PROJECT NO: 1707.00
DRAWN BY:
DRAWING SCALE: 1/8" = 1'-0"
PTN: 61721-0064
BID SET
MAY 24, 2018
SHEET TITLE

**BUS SHOP BLDG
"B" FLOOR PLAN**

SHEET NUMBER
A-B2.1

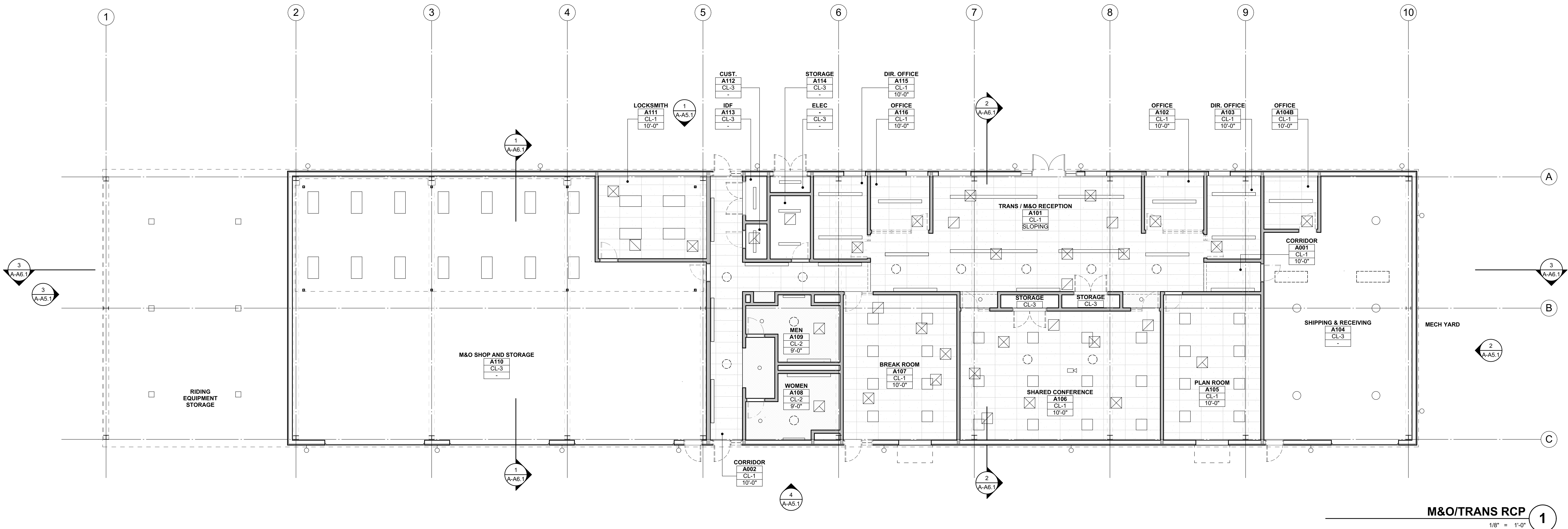


QUATTROCCHI KWOK
ARCHITECTS
Main Office:
636 Fifth Street, Santa Rosa, CA 95404
Pleasanton Office:
600 Main Street, Suite E,
Pleasanton, CA 94566
(707) 576-0829



NOTE:
MECHANICAL EQUIPMENT TO BE SUPPORTED BY METAL BUILDING
STRUCTURAL FRAMING SYSTEM TYP. SEE MECHANICAL PLANS FOR
EQUIPMENT INFORMATION AND WEIGHT.

WINDOWS, DOORS, OVERHEAD ROLL-UP DOORS, SUNSHADE AWNING
AND TUBULAR SKYLIGHTS BY OTHERS. METAL BUILDING
MANUFACTURER TO PROVIDE FRAMED OPENINGS.

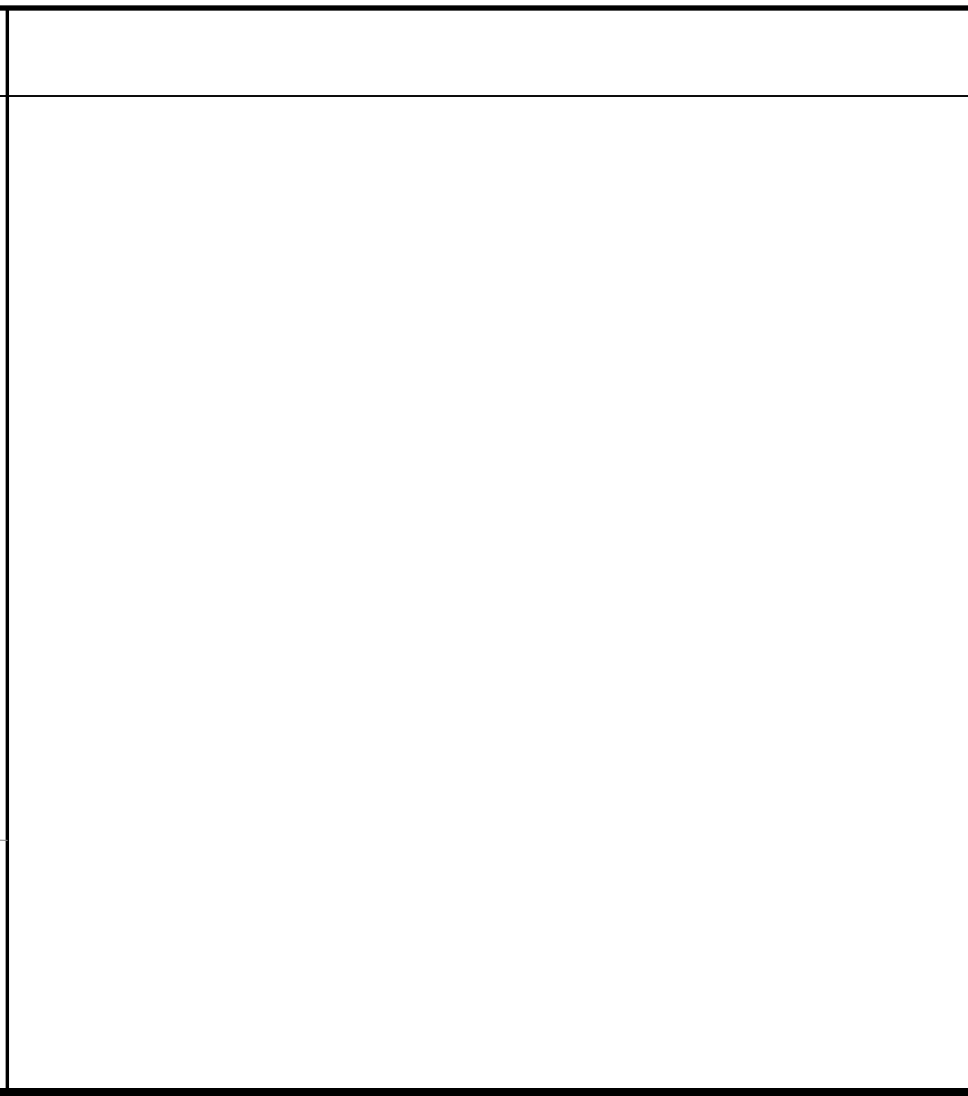
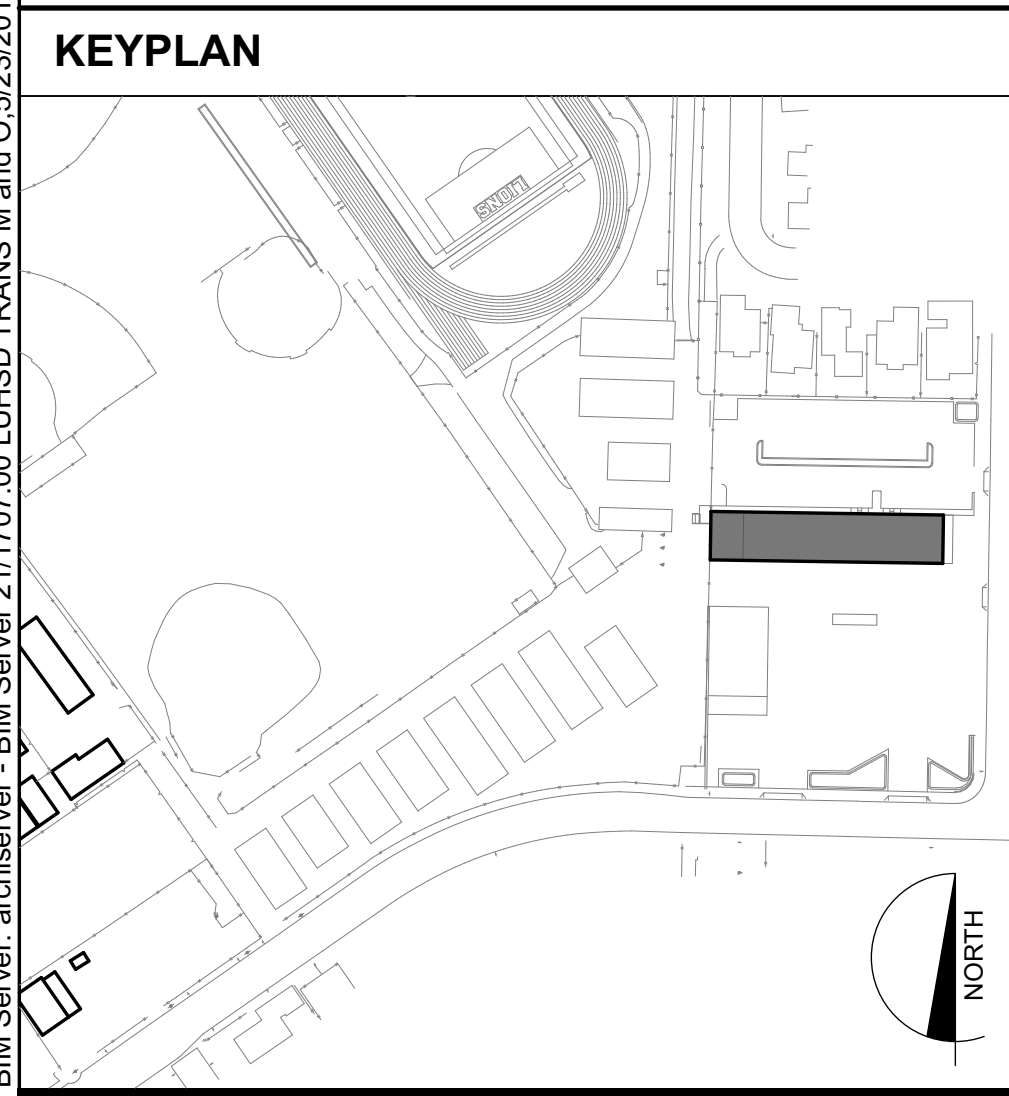


**TRANSPORTATION,
MAINTENANCE &
OPERATIONS
FACILITY**

850 2ND STREET
BRENTWOOD, CA 94513

LIBERTY UNION HIGH
SCHOOL DISTRICT

BIM Server: archiserver - BIM Server 211707.00 LHSB TRANS M and O 5/23/2018 13:42



| ROOM NAME | ROOM # | CEILING FINISH CODE |
|-------------------|--------|--|
| CL-XX | | CL-XX REFERS TO CEILING FINISH CODE. X-X" REFERS TO FINISHED CEILING HEIGHT AFF. WHERE CEILING HEIGHT IS INDICATED AS "OPEN" OR "-". ROOM IS OPEN TO STRUCTURE ABOVE. FOR CEILING CONFIGURATION & HEIGHT WHERE CEILING HEIGHT IS INDICATED AS CURVED, SLOPING, OR VARIES, REFER TO SECTION DRAWINGS. |
| Gypsum Board | | GYPSUM BOARD, SEE FINISH CODE |
| 2x4 Suspended | | 2x4 SUSPENDED CEILING SYSTEM W/ ACOUSTIC TILE, SEE FINISH CODES |
| Dashed Line | | DOORS SHOWN DASHED INDICATE DOOR BELOW. FOR DEMO, (E), AND (N) DOOR/FRAME INFORMATION SEE FLOOR PLANS & DOOR SCHEDULE |
| Circle with X | | SKYLIGHT / SOLAR TUBE ABOVE |
| Circle with dot | | ELECTRICAL ITEMS, S.E.D. |
| Circle with cross | | MECHANICAL ITEMS, S.M.D. |
| Circle with star | | FIRE SPRINKLERS, S.F.P.D. |

| CEILING FINISH CODES | DESCRIPTION |
|----------------------|---|
| CL-1 | 2'x4' SUSPENDED CEILING SYSTEM W/ ACOUSTIC TILE |
| CL-2 | SUSPENDED GYPSUM BOARD CEILING |
| CL-3 | EXPOSED TO STRUCTURE ABOVE |

REFLECTED CEILING PLAN GENERAL NOTES

NOTE:
WINDOWS, STOREFRONT SYSTEM, DOORS,
OVERHEAD ROLL-UP DOORS, SUNSHADE
AWNING AND TUBULAR SKYLIGHTS BY
OTHERS. METAL BUILDING MANUFACTURER
TO PROVIDE FRAMED OPENINGS.

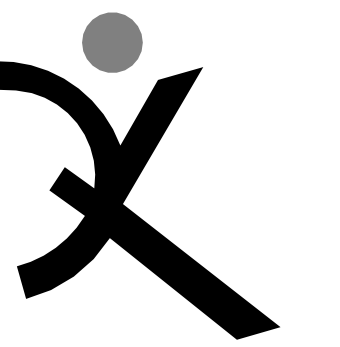
REFLECTED CEILING PLAN KEYNOTES

NOT ALL KEYNOTES MAY APPLY TO THIS SHEET

ARCH PROJECT NO: 1707.00
DRAWN BY:
DRAWING SCALE: 1/8" = 1'-0"
PTN: 61721-0064
BID SET
MAY 24, 2018
SHEET TITLE

**M&O / TRANS.
BLDG "A"
REFLECTED
CEILING PLANS**

SHEET NUMBER
A-A3.1

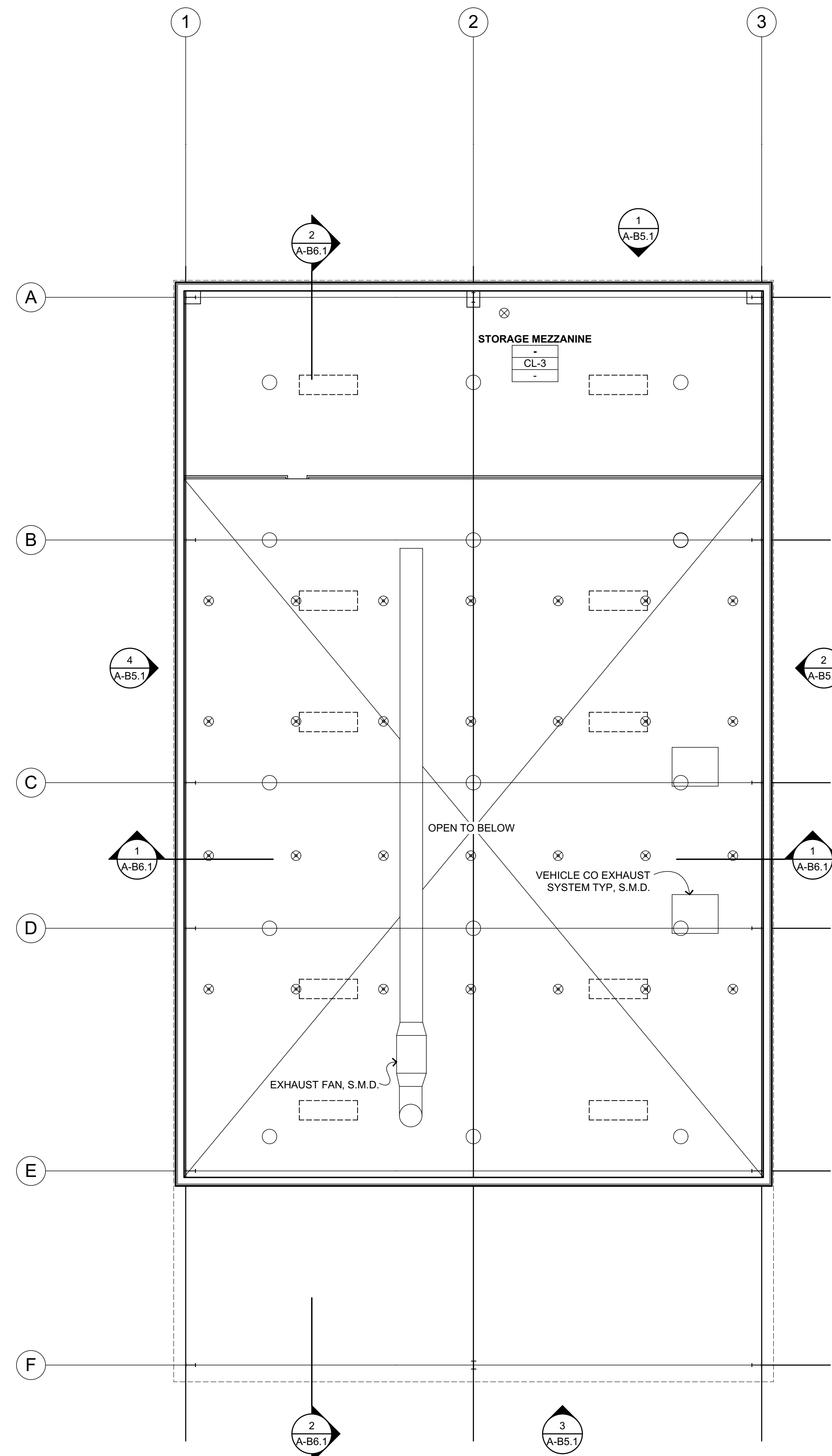


QUATTROCCHI KWOK
ARCHITECTS
Main Office:
636 Fifth Street, Santa Rosa, CA 95404
Pleasanton Office:
600 Main Street, Suite E,
Pleasanton, CA, 94566
(707) 576-0829

**TRANSPORTATION,
MAINTENANCE &
OPERATIONS
FACILITY**

850 2ND STREET
BRENTWOOD, CA 94513

LIBERTY UNION HIGH
SCHOOL DISTRICT

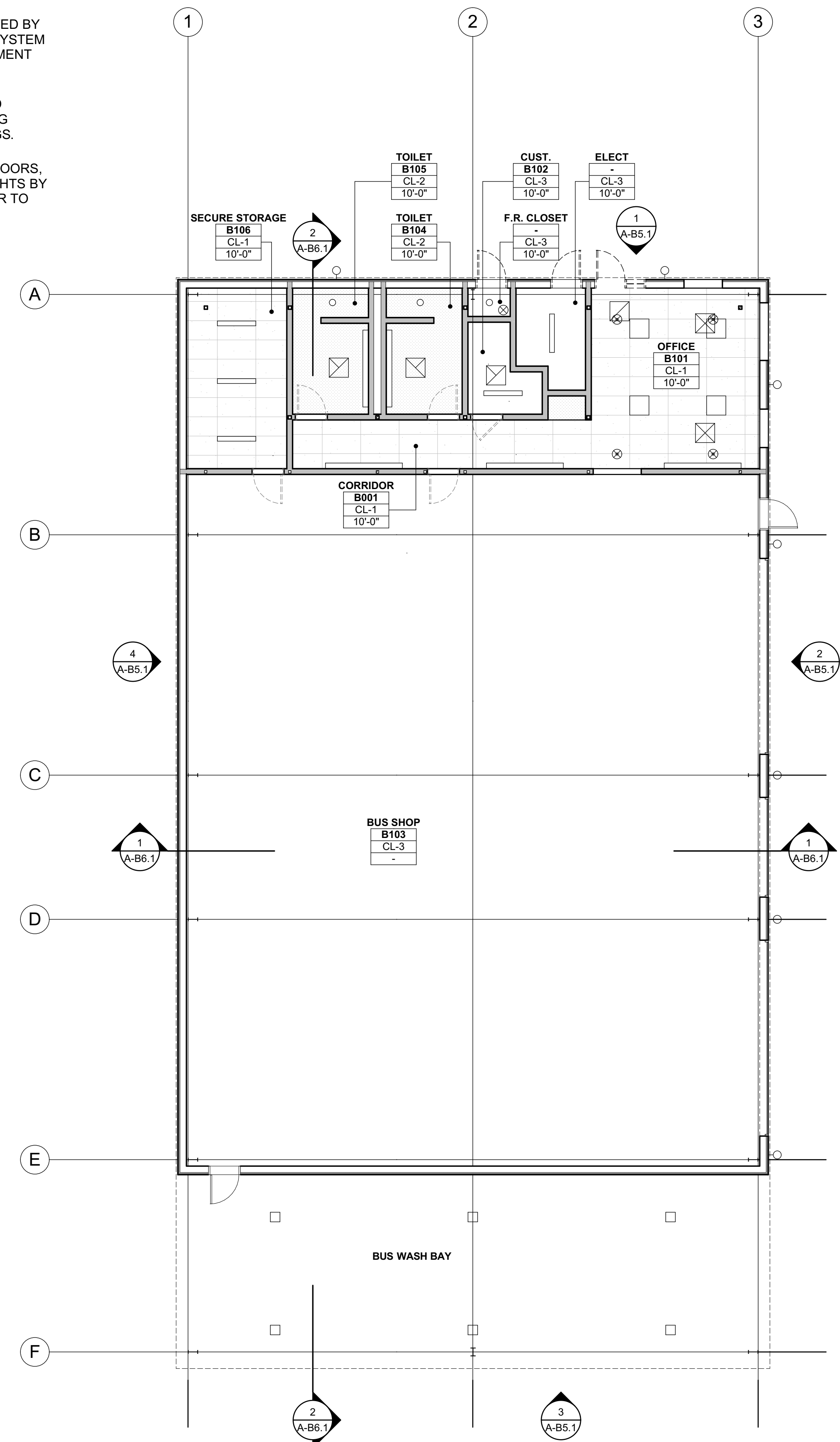


BUS SHOP MEZZANINE RCP 2
1/8" = 1'-0"

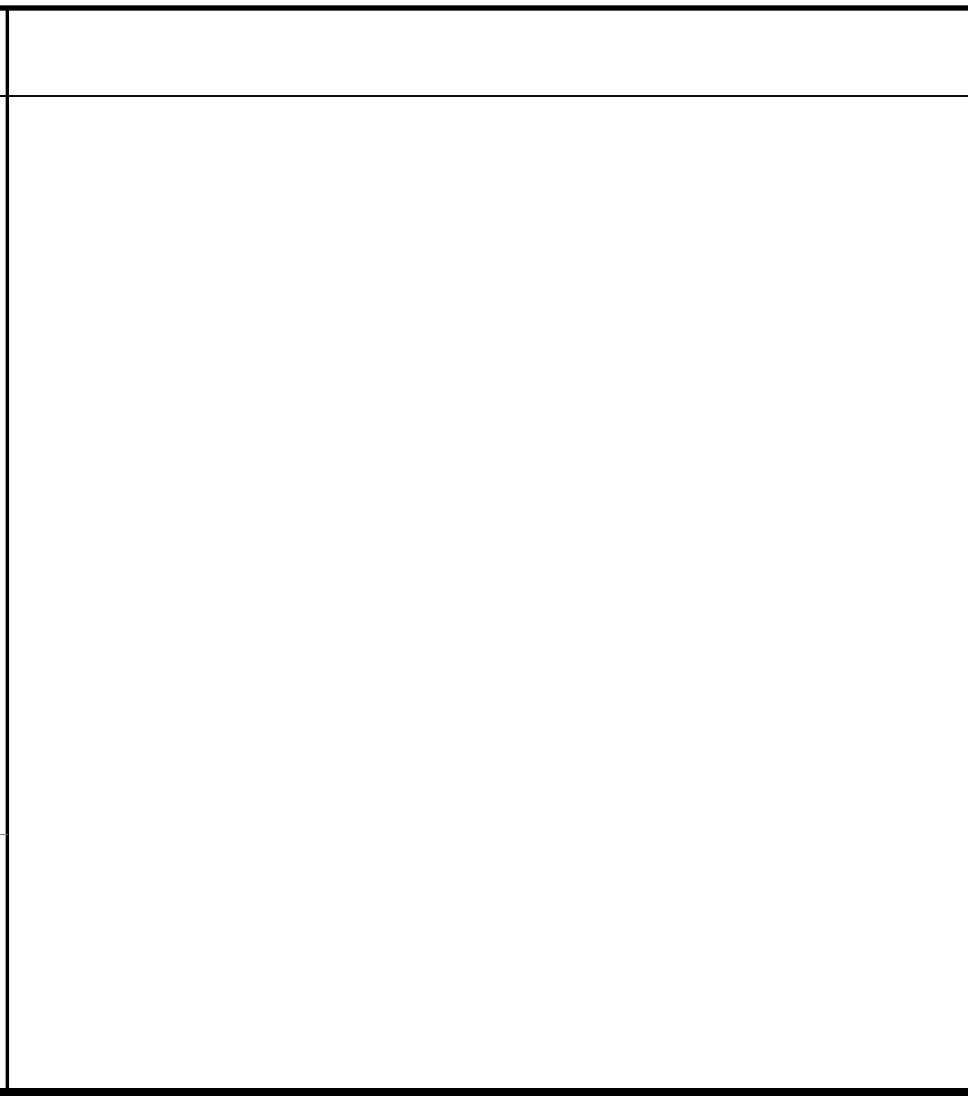
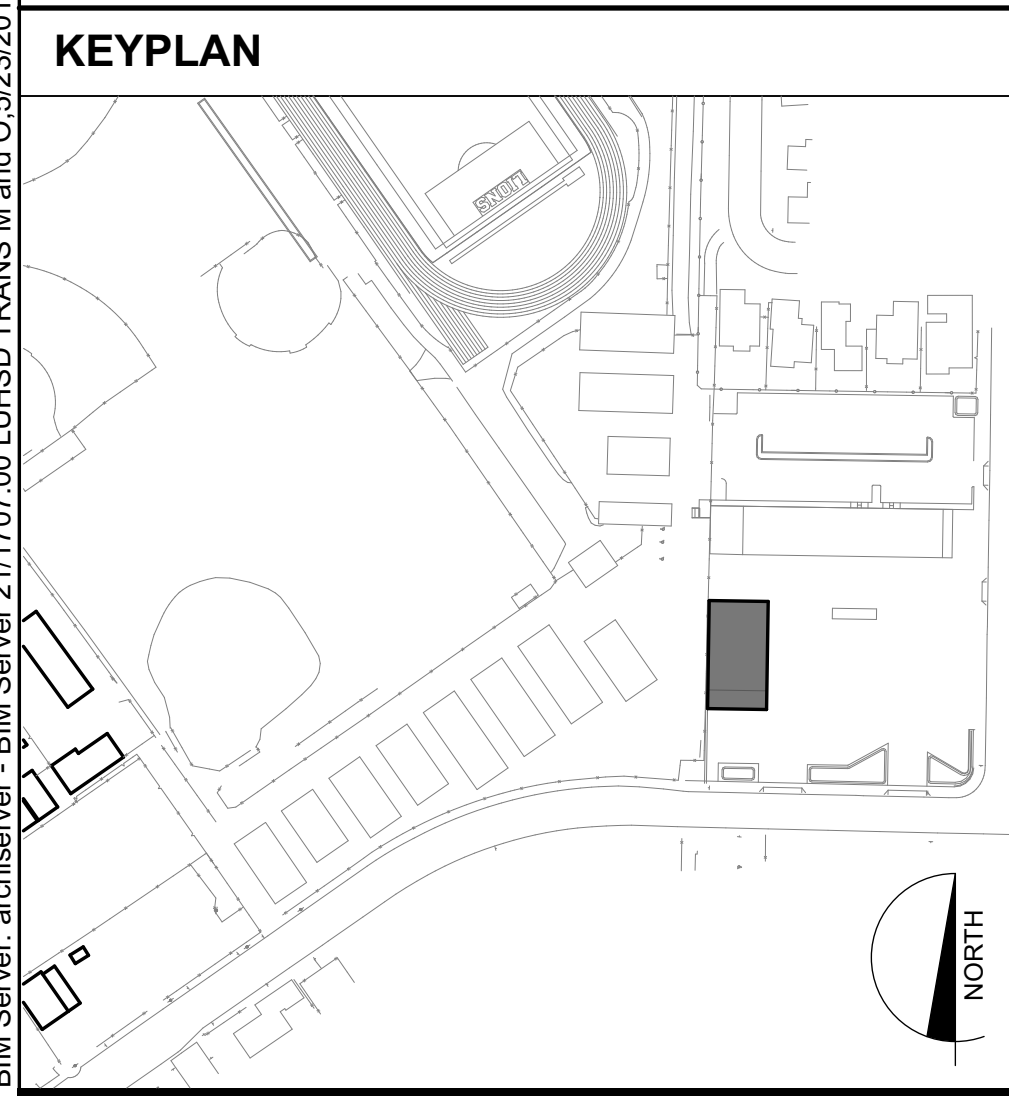
NOTE:
MECHANICAL EQUIPMENT TO BE SUPPORTED BY METAL BUILDING STRUCTURAL FRAMING SYSTEM TYP. SEE MECHANICAL PLANS FOR EQUIPMENT INFORMATION AND WEIGHT.

FIRE SPRINKLER PIPES TO BE SUPPORTED BY METAL BUILDING STRUCTURAL FRAMING SYSTEM. SEE FIRE PROTECTION DRAWINGS.

WINDOWS, DOORS, OVERHEAD ROLL-UP DOORS, SUNSHADE AWNING AND TUBULAR SKYLIGHTS BY OTHERS. METAL BUILDING MANUFACTURER TO PROVIDE FRAMED OPENINGS.



BUS SHOP RCP 1
1/8" = 1'-0"



CEILING FINISH CODES FOR PAINT FINISHES SEE SEC. 09 9113 (EXTERIOR) & 09 9123 (INTERIOR).

| | | |
|------|---|--|
| CL-1 | 2'x4' SUSPENDED CEILING SYSTEM W/ ACOUSTIC TILE | |
| CL-2 | SUSPENDED GYPSUM BOARD CEILING | |
| CL-3 | EXPOSED TO STRUCTURE ABOVE | |

REFLECTED CEILING PLAN GENERAL NOTES

REFLECTED CEILING PLAN KEYNOTES
NOT ALL KEYNOTES MAY APPLY TO THIS SHEET

BIM Server: archiserver - BIM Server 21/1707.00 LHSJ TRANS M and O 5/23/2018 12:14

ARCH PROJECT NO: 1707.00

DRAWN BY:

DRAWING SCALE: 61721-0064

PTN:

BID SET

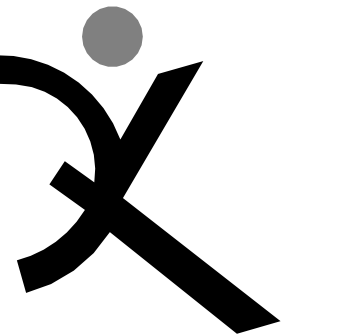
MAY 24, 2018

SHEET TITLE

**BUS SHOP BLDG
"B" REFLECTED
CEILING PLANS**

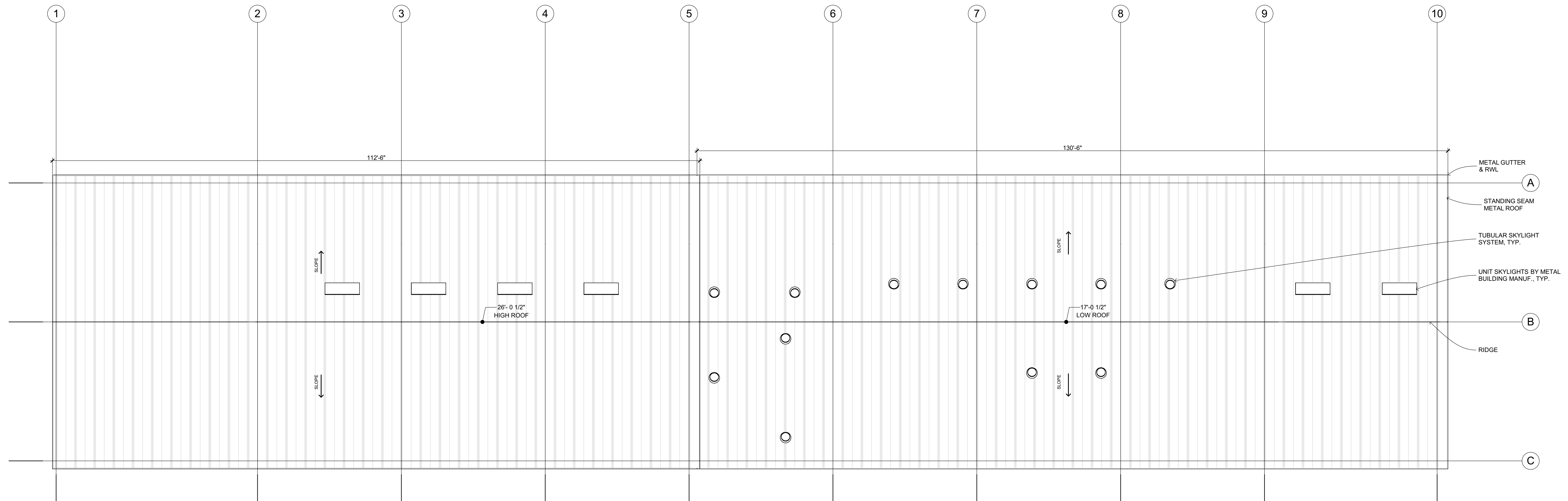
SHEET NUMBER

A-B3.1



QUATTROCCHI KWOK
ARCHITECTS
Main Office:
636 Fifth Street, Santa Rosa, CA 95404
Pleasanton Office:
600 Main Street, Suite E,
Pleasanton, CA, 94566
(707) 576-0829

NOTE:
WINDOWS, DOORS, OVERHEAD ROLL-UP DOORS, SUNSHADE AWNING
AND TUBULAR SKYLIGHTS BY OTHERS. METAL BUILDING
MANUFACTURER TO PROVIDE FRAMED OPENINGS.



M&O/TRANS. ROOF PLAN 1
1/8" = 1'-0"

**TRANSPORTATION,
MAINTENANCE &
OPERATIONS
FACILITY**

850 2ND STREET
BRENTWOOD, CA 94513

LIBERTY UNION HIGH
SCHOOL DISTRICT

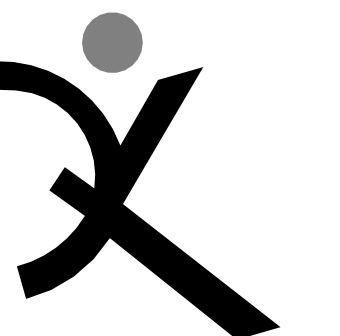
BIM Server: architecture - BIM Server 211707.00 LHSB TRANS M and O 5/23/2018 12:14

| KEYPLAN | ROOF PLAN LEGEND | ROOF PLAN GENERAL NOTES | ROOF PLAN KEYNOTES |
|---------|------------------|-------------------------|---|
| | | | <p>NOT ALL KEYNOTES MAY APPLY TO THIS SHEET</p> |

ARCH PROJECT NO: 1707.00
DRAWN BY: HME
DRAWING SCALE: 1/8" = 1'-0"
PTN: 61721-0064
BID SET
MAY 24, 2018

**M&O / TRANS.
BLDG "A" ROOF
PLAN**

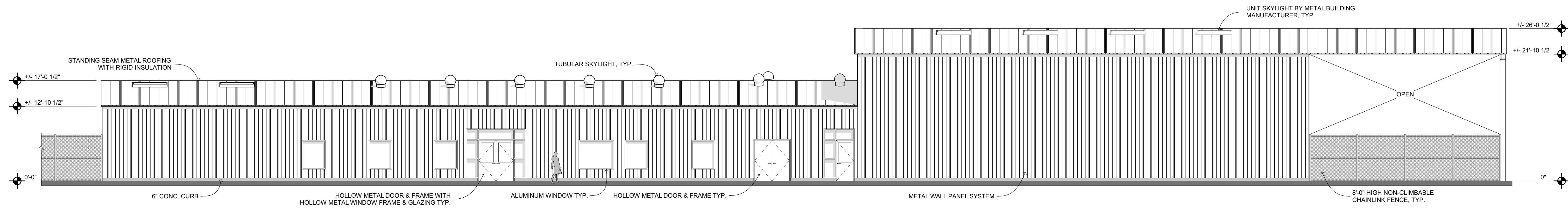
SHEET NUMBER
A-A4.1



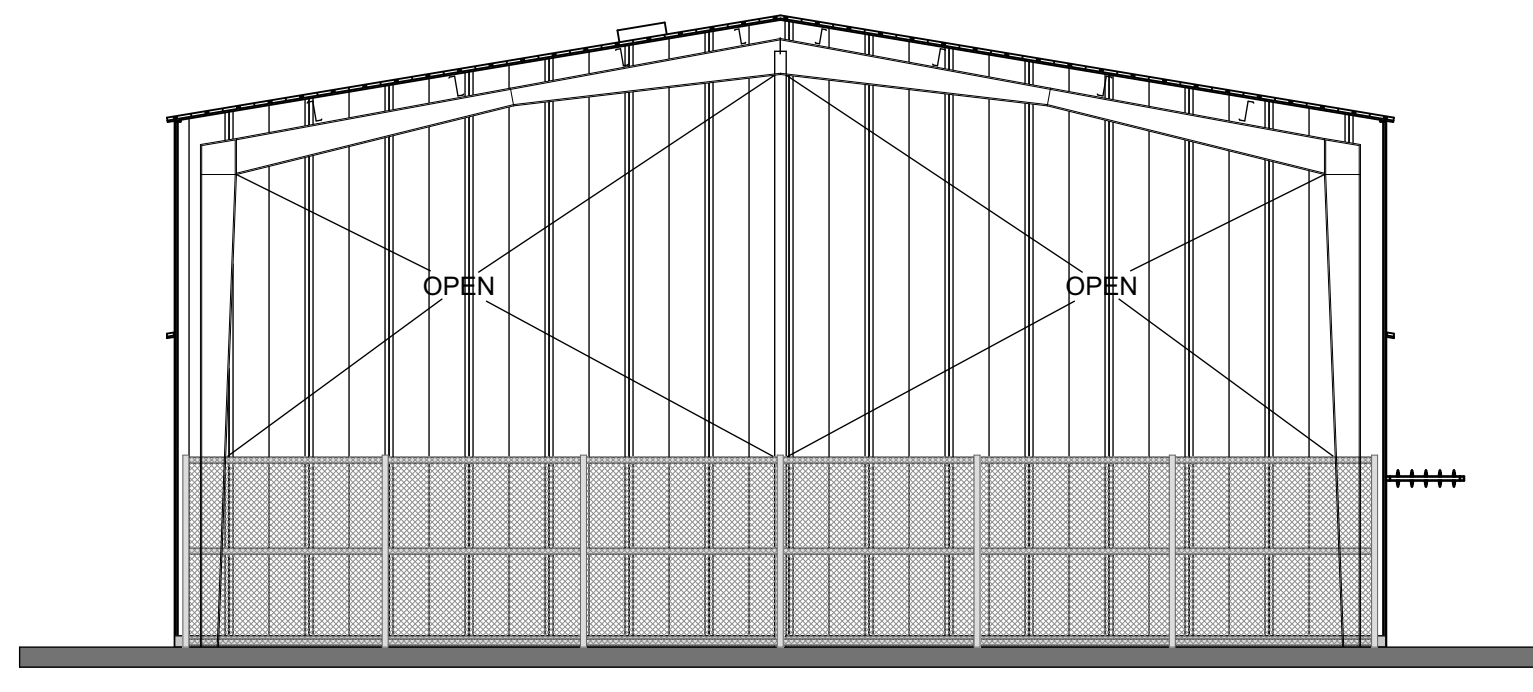
QUATTROCCHI KWOK ARCHITECTS

Main Office: 636 Fifth Street, Santa Rosa, CA 95404
Pleasanton Office: 600 Main Street, Suite E, Pleasanton, CA 94566
(707) 576-9829

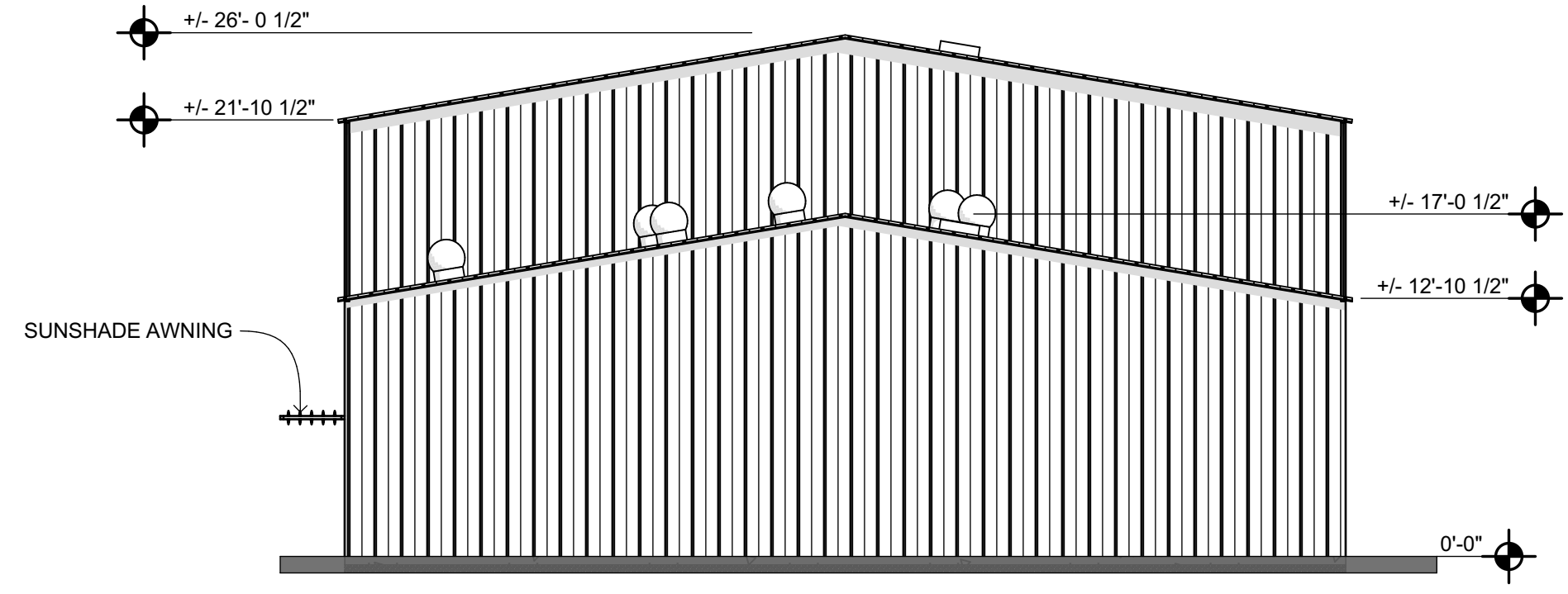
NOTE:
WINDOWS, DOORS, OVERHEAD ROLL-UP DOORS, SUNSHADE AWNING AND TUBULAR SKYLIGHTS BY OTHERS. METAL BUILDING MANUFACTURER TO PROVIDE FRAMED OPENINGS.



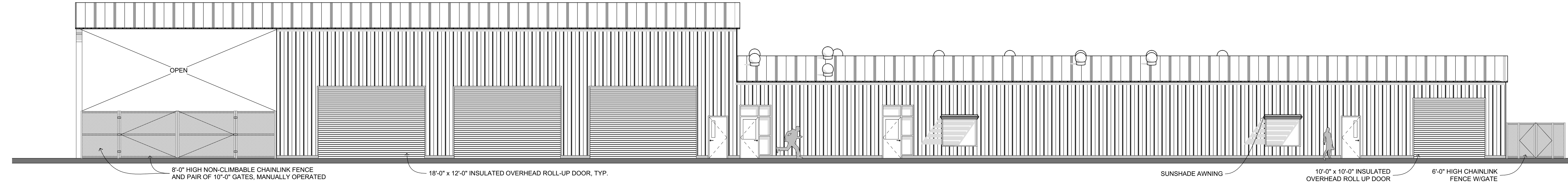
M&O NORTH ELEVATION 1
1/8" = 1'-0"



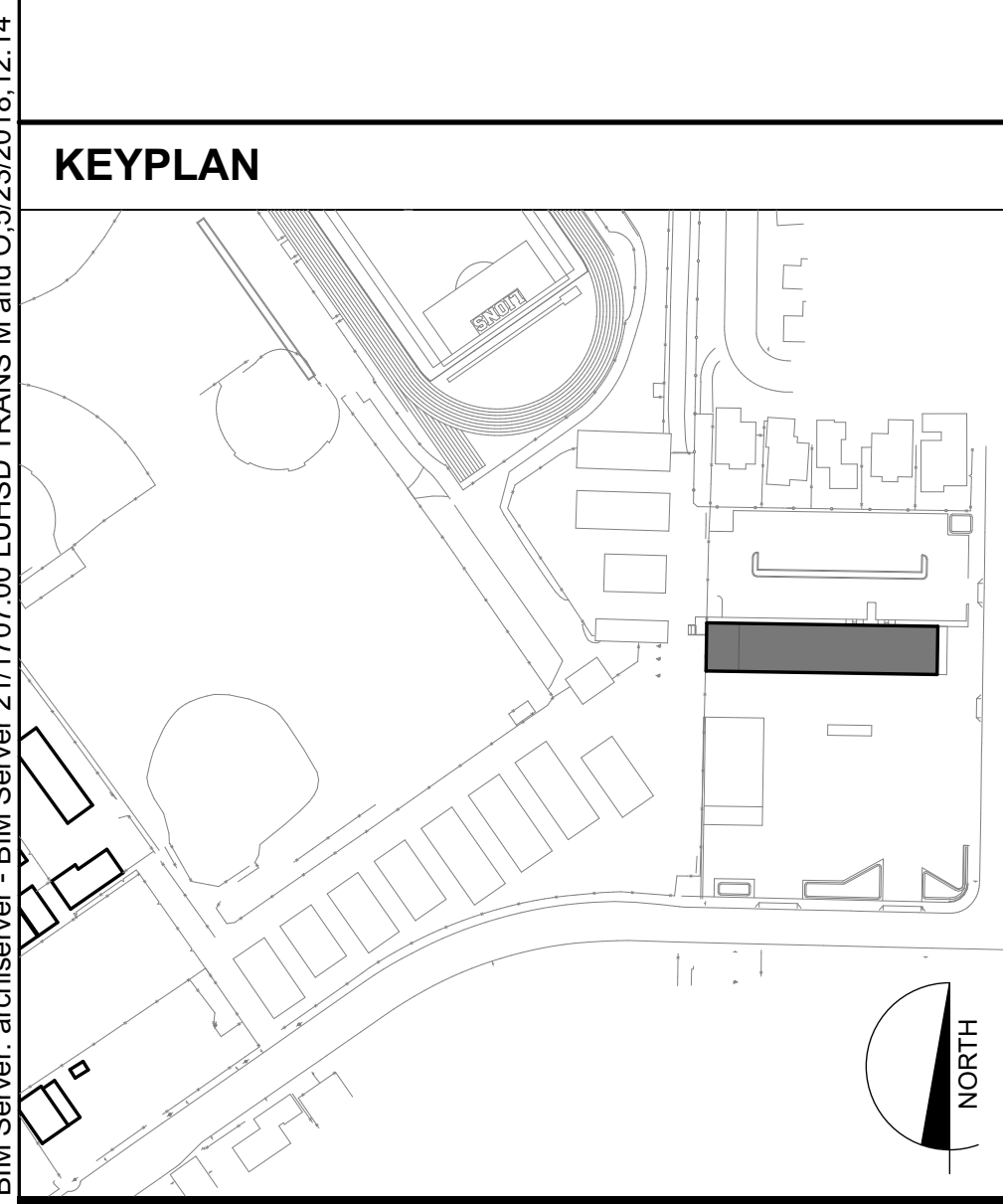
M&O WEST ELEVATION 3
1/8" = 1'-0"



M&O EAST ELEVATION 2
1/8" = 1'-0"



M&O SOUTH ELEVATION 4
1/8" = 1'-0"



KEYPLAN

EXTERIOR ELEVATION LEGEND

EXTERIOR ELEVATION GENERAL NOTES

EXTERIOR ELEVATION KEYNOTES

NOT ALL KEYNOTES MAY BE USED ON ALL SHEETS

ARCH PROJECT NO: 1707.00
DRAWN BY:
DRAWING SCALE: 61721-0064
PTN:
BID SET
MAY 24, 2018
SHEET TITLE

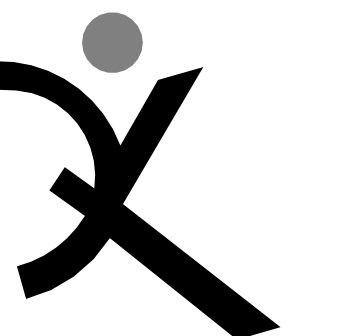
M&O/TRANS. BLDG "A" EXTERIOR ELEVATIONS
SHEET NUMBER
A-A5.1

TRANSPORTATION, MAINTENANCE & OPERATIONS FACILITY

850 2ND STREET BRENTWOOD, CA 94513

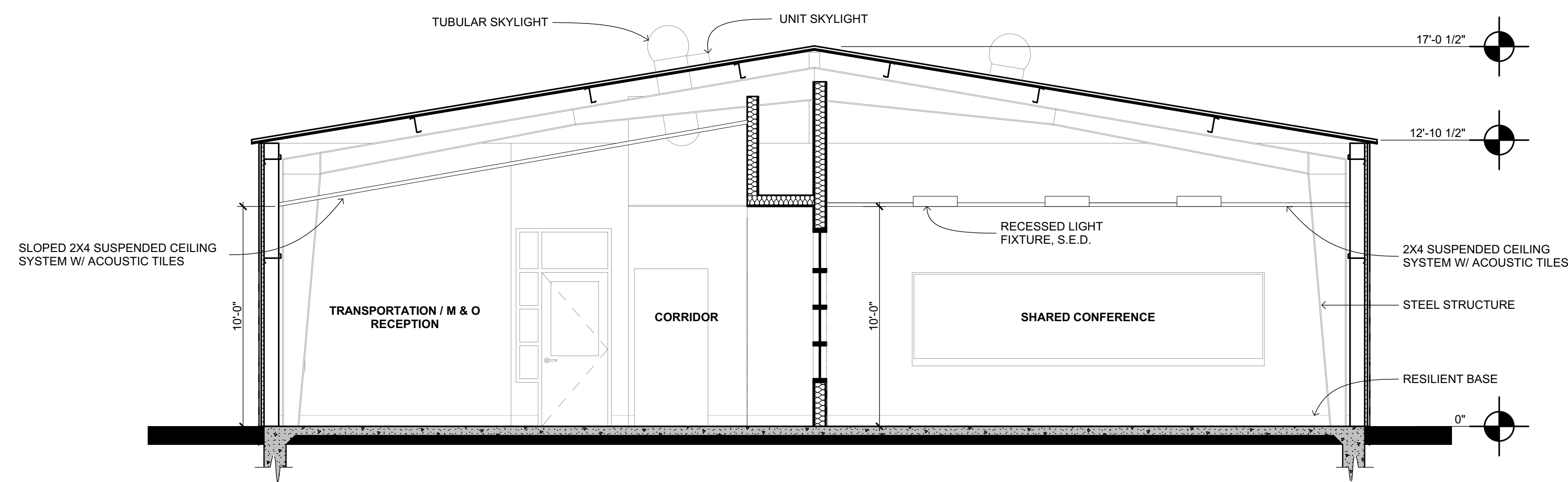
LIBERTY UNION HIGH SCHOOL DISTRICT

BIM Server: architect - BIM Server 211707.00 LUIS TRANS M and O 5/23/2018 12:14

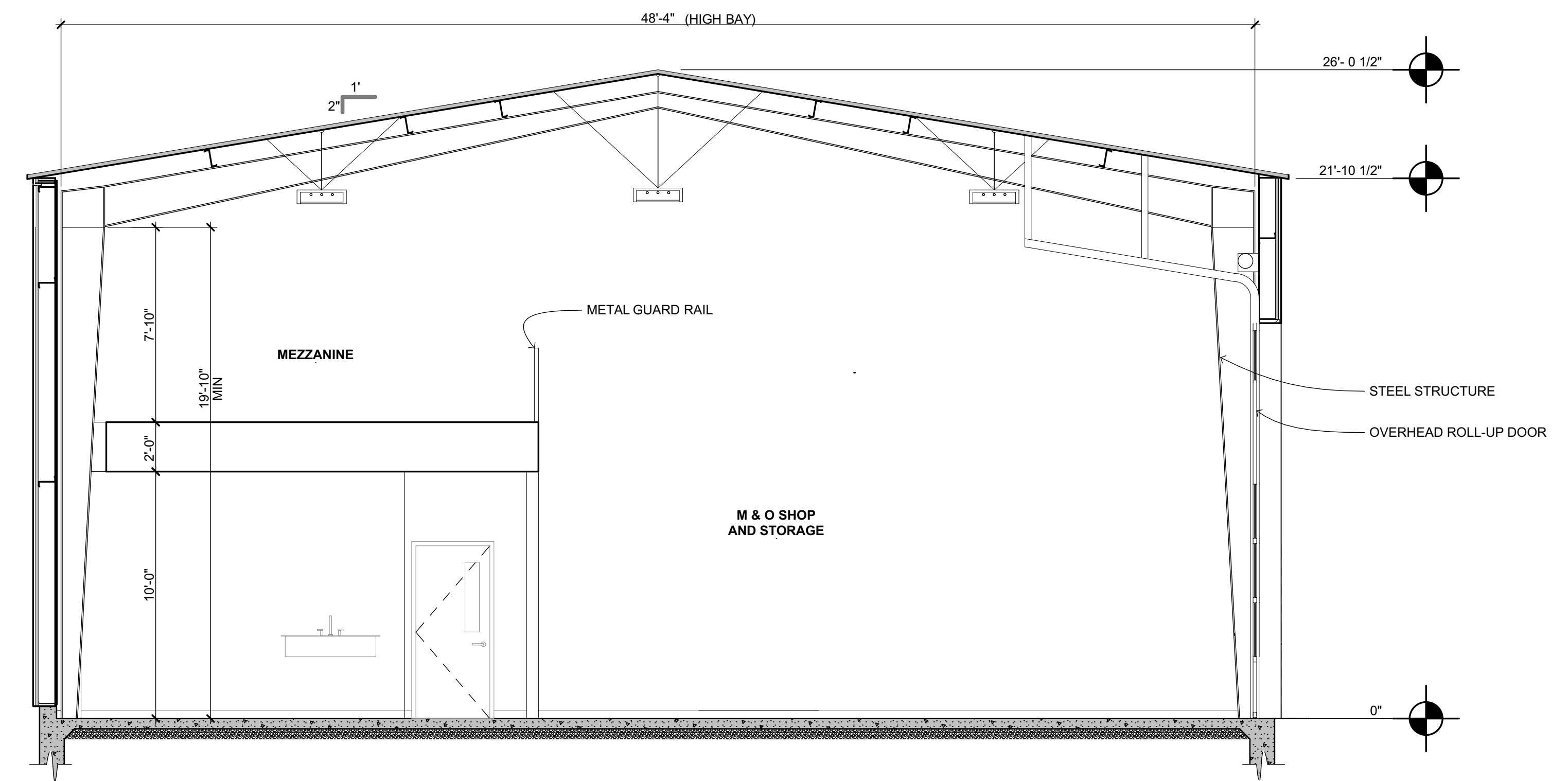


QUATTROCCHI KWOK
ARCHITECTS
Main Office:
636 Fifth Street, Santa Rosa, CA 95404
Pleasanton Office:
600 Main Street, Suite E,
Pleasanton, CA 94566
(707) 576-0829

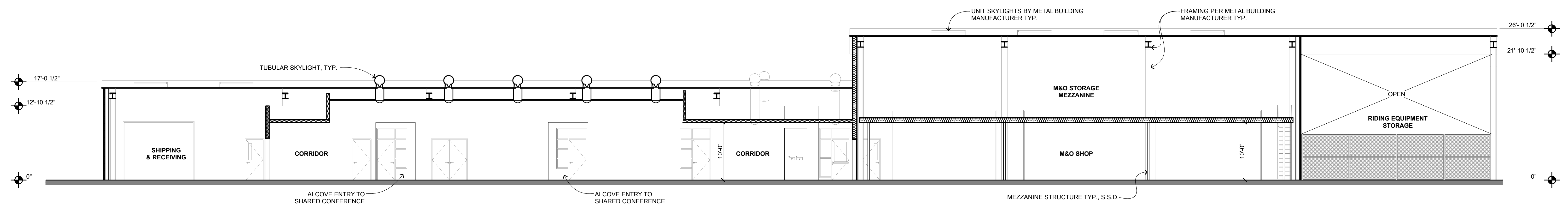
NOTE:
WINDOWS, DOORS, OVERHEAD ROLL-UP DOORS, SUNSHADE
AWNING AND TUBULAR SKYLIGHTS BY OTHERS. METAL
BUILDING MANUFACTURER TO PROVIDE FRAMED OPENINGS.



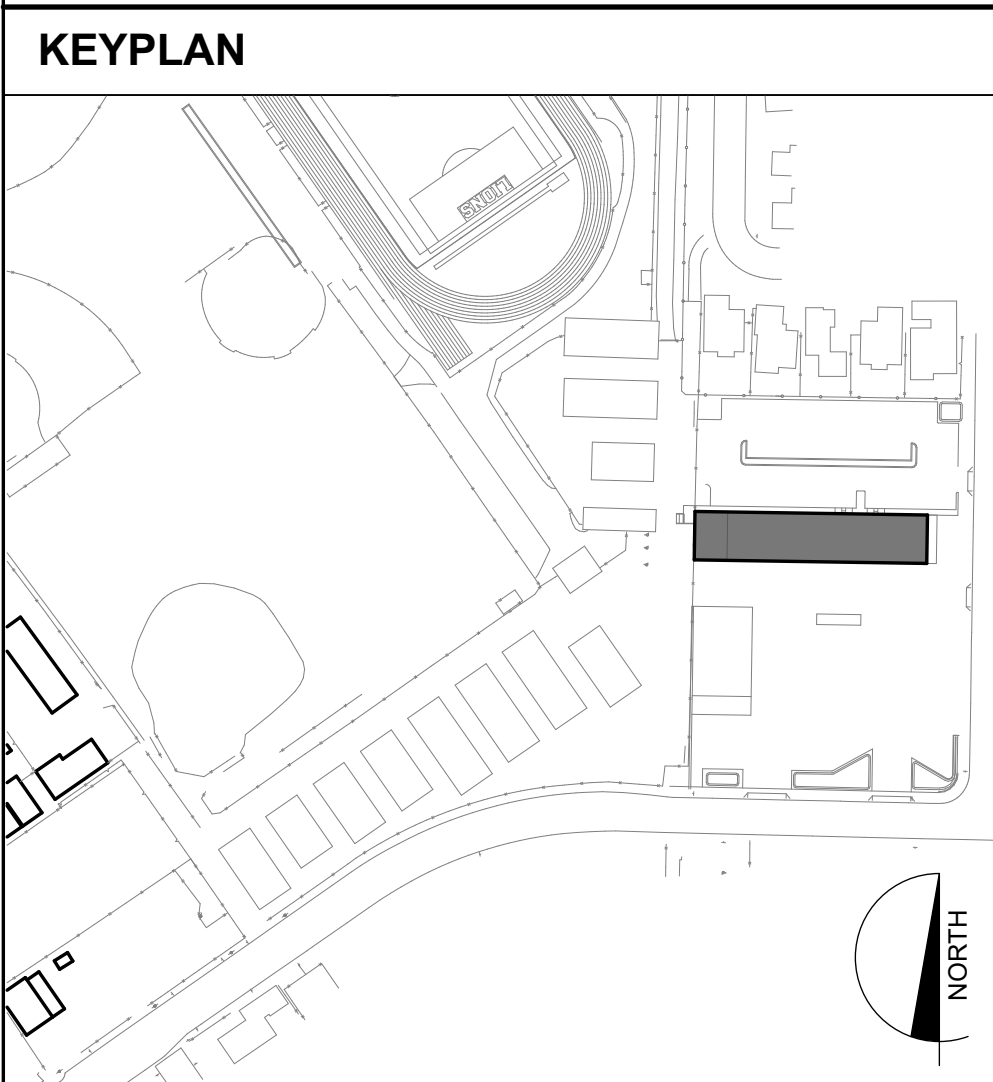
LOW BAY - RECEPTION & SHARED CONFERENCE 2
1/4" = 1'-0"



HIGH BAY - M&O SHOP AND MEZZANINE 1
1/4" = 1'-0"



BLDG CROSS SECTION 3
1/8" = 1'-0"



KEYPLAN

SECTION GENERAL NOTES

SECTION KEYNOTES

TRANSPORTATION,
MAINTENANCE &
OPERATIONS
FACILITY

850 2ND STREET
BRENTWOOD, CA 94513

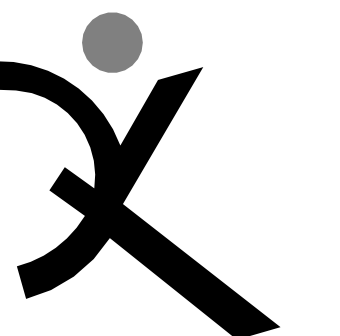
LIBERTY UNION HIGH
SCHOOL DISTRICT

ARCH PROJECT NO: 1707.00
DRAWN BY:
DRAWING SCALE:
PTN: 61721-0064
BID SET
MAY 24, 2018
SHEET TITLE

M&O/TRANS.
BLDG "A"
SECTIONS

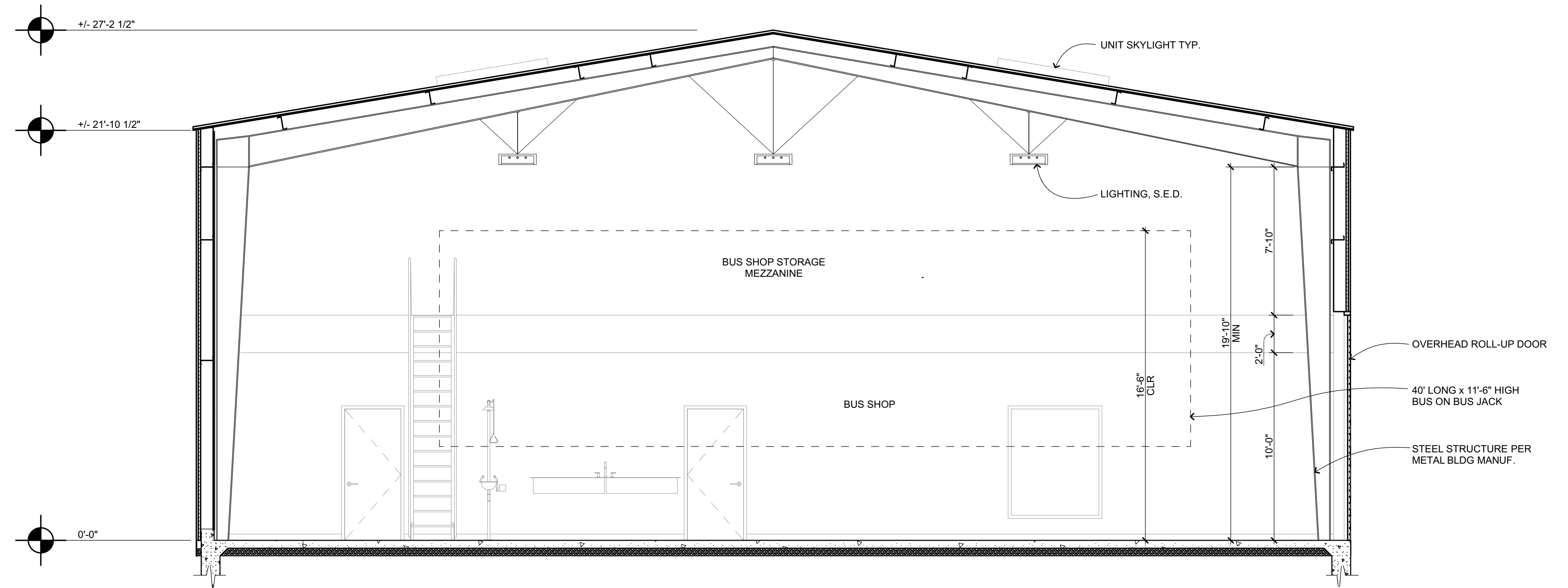
SHEET NUMBER
A-A6.1

BIM Server: architecture - BIM Server 21171707.00 LUISD TRANS M and O 5/23/2018 12:14

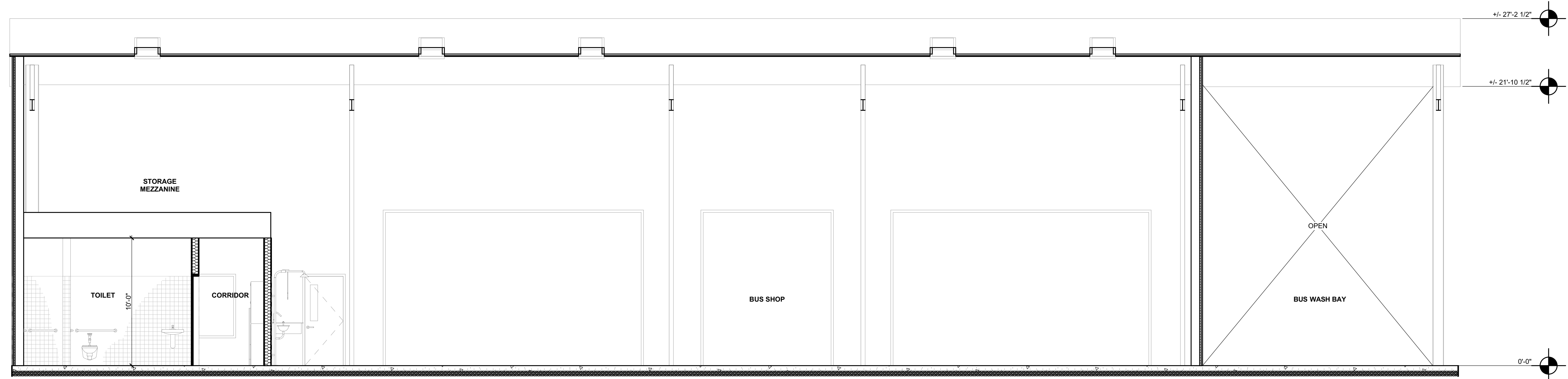


QUATTROCCHI KWOK
ARCHITECTS
Main Office:
636 Fifth Street, Santa Rosa, CA 95404
Pleasanton Office:
600 Main Street, Suite E,
Pleasanton, CA 94566
(707) 576-0829

NOTE:
WINDOWS, DOORS, OVERHEAD ROLL-UP DOORS, SUNSHADE
AWNING AND TUBULAR SKYLIGHTS BY OTHERS. METAL
BUILDING MANUFACTURER TO PROVIDE FRAMED OPENINGS.

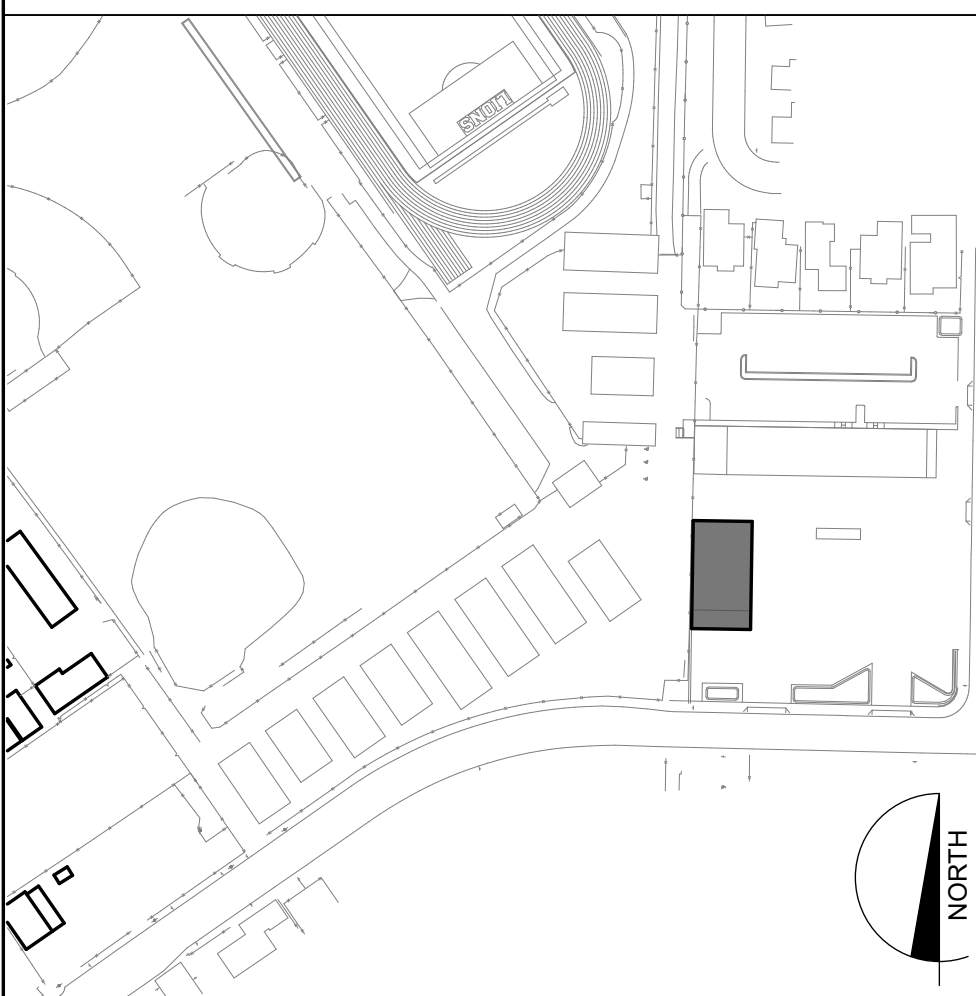


BUS SHOP SECTION 1
1/4" = 1'-0"



BUS SHOP CROSS SECTION 2
1/4" = 1'-0"

KEYPLAN



SECTION GENERAL NOTES

SECTION KEYNOTES

NOT ALL KEYNOTES MAY BE USED ON ALL SHEETS

**TRANSPORTATION,
MAINTENANCE &
OPERATIONS
FACILITY**

850 2ND STREET
BRENTWOOD, CA 94513

LIBERTY UNION HIGH
SCHOOL DISTRICT

ARCH PROJECT NO: 1707.00

DRAWN BY:

DRAWING SCALE: 61721-0064

PTN:

BID SET

MAY 24, 2018

SHEET TITLE

**BUS SHOP BLDG
"B" SECTIONS**

SHEET NUMBER

A-B6.1

BIM Server: architect - BIM Server 211707.00 LHSB TRANS M and O 5/23/2018 12:14